



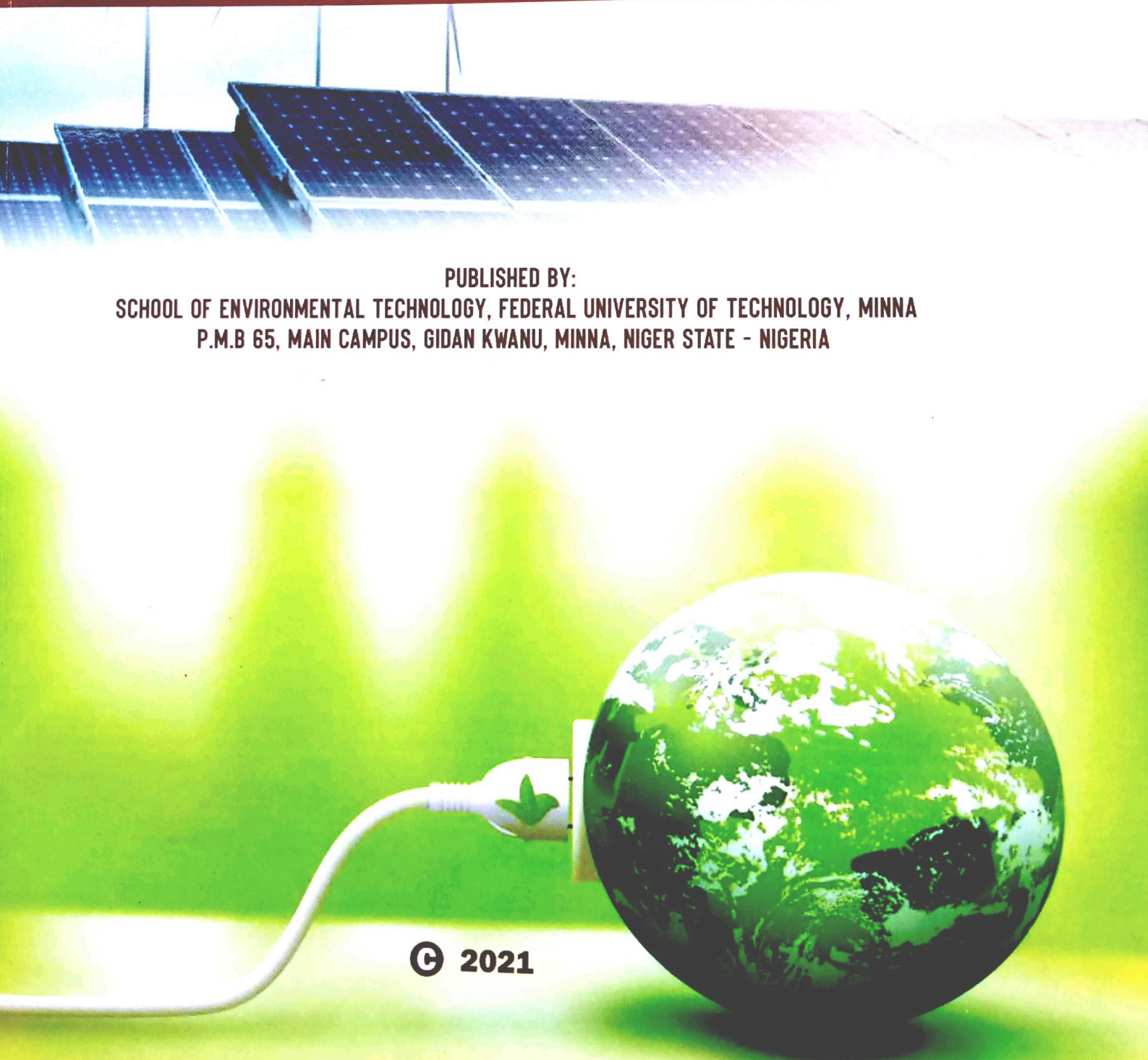
ENVIRONMENTAL TECHNOLOGY & SCIENCE JOURNAL (ETSJ)

ISSN: 2006-0459

VOLUME 12 NUMBER 2 - DECEMBER, 2021

**PUBLISHED BY:
SCHOOL OF ENVIRONMENTAL TECHNOLOGY, FEDERAL UNIVERSITY OF TECHNOLOGY, MINNA
P.M.B 65, MAIN CAMPUS, GIDAN KWANU, MINNA, NIGER STATE - NIGERIA**

© 2021



Environmental Technology & Science Journal

Vol. 12 Number 2

December 2021

Aim and Scope

The Environmental Technology and Science Journal (ETSJ) is devoted to the publication of papers which advance knowledge of practical and theoretical issues that daily plague our society. The aim of the journal is to provide an avenue for the dissemination of academic research findings from various disciplines of the environment, engineering, pure and applied sciences, arts and social science which have materials that emphasize on environmental issues.

ETSJ Policy

ETSJ prohibits an author from submitting the same manuscript for concurrent consideration in two or more publications. The author must ensure that when a manuscript is submitted to ETSJ, the manuscript must be an original work. The Author should check the manuscript for any possible plagiarism using any program such as TURNITIN or any other software before submitting the manuscripts to ETSJ. Authors are not permitted to add or remove any names from the authorship provided at the time of initial submission without the consent of the Journal's Editor-in-Chief.

Guide for Authors

Please read the guidelines and follow the instructions carefully; doing so will ensure that the publication of your manuscript is as rapid and efficient as possible. The Editorial Board reserves the right to return manuscripts without review that are not prepared in accordance with these guidelines.

1. Manuscripts should not be more than 15 pages of A4 paper size (including abstracts, tables, figures, references and appendices) typed in double spacing, times new roman and font size 12. Additional fee of two thousand (₦2000) Naira will be charged for every additional page in excess of 15 pages.
2. Each paper must be compiled in one column; all text should be left and right justified. The page settings to be 25cm (1 inch) each for the top, bottom, left and right margins of an A4 paper. Decimal numbering of all sections of the article is recommended (with the exception of the reference and acknowledgement sections).
3. To ensure anonymity in the peer reviewing process, articles must be structured in such a way that the title of the paper, authors' names, address, and affiliation are written on the first page, followed by abstract and the body of the paper in that order.
4. Each article should contain an abstract of not more than 300 words.
5. Each article should contain between 5 and 7 key words (avoid use of phrases).
6. Use the SI (*Systeme Internationale*) units and symbols, while Unusual Characters and symbols should be explained in a list of nomenclatures.
7. The journal's referencing style is the APA format.
8. Figures, Tables and Graphs are to be placed at the appropriate places in the paper and not at the end of the paper.
9. Acknowledgement is optional, except for researches being funded through research grant awards.
10. Authors should avoid using headers, footers and special page breaks within the manuscripts.
11. The manuscript is to be sent via electronic means to: etsj@futminna.edu.ng for a blind peer review, which under normal circumstance will not exceed 4 weeks, after which the status of the article will be communicated to the Author(s).

12. Author(s) with positive review will be asked to effect corrections or revisions after which the camera-ready manuscript is to be emailed to etsj@futminna.edu.ng and to be accompanied by evidence of payment of publication fee.
13. The Editorial board is not responsible for the information or views expressed by the author(s).
14. The copyright of this journal belongs exclusively to the Editorial Board of Environmental Technology and Science Journal. No part of the publication may be reproduced, stored in a retrieval system or transmitted in any form or by any means, electronic, mechanical, photocopying, recording or otherwise without prior permission of the School of Environmental Technology, Federal University of Technology, Minna-Nigeria or a licence permitting restricted copying.

Frequency of Publication

The journal is published twice a year in June and December

Subscription Details

The 2021 subscription rates for hardcopies of the journal including postage are:

Individual within Nigeria: N2,000 per copy and N1,000 for postage

Individual outside Nigeria including postage \$ 100

Institution within Nigeria: N5,000 per copy and N1,000 for postage

Institution outside Nigeria including postage: \$ 150

Correspondence

All correspondence should be addressed to

The Managing Editor

Environmental Technology & Science Journal

SET, FUT, Minna, Nigeria

Email: etsj@futminna.edu.ng

Phone: +234 805 170 3663, +234 803 653 4507

Published By

School of Environmental Technology, Federal University of Technology,
Minna-Nigeria

Managing Editor

Prof R. A. Jimoh
Department of Building,
Federal University of Technology,
Minna, Nigeria

Editorial Secretary I

Dr B. O. Ganiyu
Department of Quantity
Surveying,
Federal University of Technology,
Minna, Nigeria
+234 803 626 9235

Editorial Secretary II

Dr E. B. Ogunbode
Department of Building,
Federal University of Technology,
Minna, Nigeria
+234 806 328 6122

Editorial Committee

Dr A. D. Adamu
Department of Quantity
Surveying,
Federal University of Technology,
Minna, Nigeria

Prof I. C. Onuigbo
Department of Surveying &
Geoinformatics,
Federal University of Technology,
Minna, Nigeria

Prof O. A. Kemiki
Department of Estate Management
and Valuation,
Federal University of Technology,
Minna, Nigeria

Dr P. Ayuba
Department of Architecture,
Federal University of Technology,
Minna, Nigeria

Dr J. E. Idiake
Department of Quantity
Surveying,
Federal University of Technology,
Minna, Nigeria

Dr A. Kawu
Department of Urban & Regional
Planning,
Federal University of Technology,
Minna, Nigeria

Dr I. B. Muhammad
Department of Architecture,
Federal University of Technology,
Minna, Nigeria

Editorial Advisers

Prof R. E. Olagunju

Department of Architecture,
Federal University of Technology,
Minna, Nigeria

Prof (Mrs) S. N. Zubairu

Department of Architecture,
Federal University of Technology,
Minna, Nigeria

Prof A. M. Junaid

Department of Urban & Regional
Planning,
Federal University of Technology,
Minna, Nigeria

Prof Y. A. Sanusi

Department of Urban & Regional
Planning,
Federal University of Technology,
Minna, Nigeria

Prof D. A. Muazu

Department of Building,
Baze University,
Abuja, Nigeria

Prof I. O. Aje

Department of Quantity
Surveying,
Federal University of Technology,
Akure, Nigeria

Prof B. T. Aluko

Department of Estate
Management,
Obafemi Awolowo University,
Ile-Ife, Nigeria

Prof P. C. Nwilo

Department of Surveying &
Geoinformatics,
University of Lagos,
Lagos, Nigeria

Prof U. O. Nkwogu

Department of Architecture,
Imo State University,
Owerri, Nigeria

Deputy Editor
Dr. P. A. Osof
Department of Building
Federal University of Technology
Akoka, Lagos, Nigeria

Deputy Secretary I
Dr. O. G. Ganiyu
Department of Quantity
Surveying
Federal University of Technology
Akoka, Lagos, Nigeria
Tel: 01-461 9227

Deputy Secretary II
Dr. B. Ogunbade
Department of Building
Federal University of Technology
Akoka, Lagos, Nigeria
Tel: 01-461 9227

Editorial Committee

Dr. A. D. Adams
Department of Quantity
Surveying
Federal University of Technology
Minna, Nigeria

Prof. I. C. Obengye
Department of Surveying &
Geoinformatics
Federal University of Technology
Minna, Nigeria

Prof. O. A. Kumbi
Department of Urban Management
and Planning
Federal University of Technology
Minna, Nigeria

Dr. F. Ayuba
Department of Architecture
Federal University of Technology
Minna, Nigeria

Dr. J. I. Idah
Department of Quantity
Surveying
Federal University of Technology
Minna, Nigeria

Dr. A. Kawa
Department of Urban & Regional
Planning
Federal University of Technology
Minna, Nigeria

Dr. I. B. Muhammad
Department of Architecture
Federal University of Technology
Minna, Nigeria

Editorial Advisory

Prof. E. J. Ogunrin
Department of Architecture
Federal University of Technology
Minna, Nigeria

Prof. (Mrs.) B. Zaitava
Department of Architecture
Federal University of Technology
Minna, Nigeria

Prof. A. M. Samail
Department of Urban & Regional
Planning
Federal University of Technology
Minna, Nigeria

Prof. A. A. Samat
Department of Urban & Regional
Planning
Federal University of Technology
Minna, Nigeria

Prof. E. E. Olatun
Department of Building
Federal University
Akoka, Nigeria

Prof. I. O. Ojo
Department of Quantity
Surveying
Federal University of Technology
Minna, Nigeria

Prof. E. T. Olatu
Department of Urban
Management
Obafemi Awolowo University
Ile-Ife, Nigeria

Prof. F. I. Odeh
Department of Surveying &
Geoinformatics
University of Lagos
Lagos, Nigeria

Prof. I. O. Nwagwu
Department of Architecture
Imo State University
Owerri, Nigeria

Editorial

The 2021 United Nations Climate Change Conference (COP26) that took place in Glasgow, Scotland from 31st October to 13th November has come and gone leaving the environment at the mercy of developed and developing nations. The global warming is still far from the 1.5°c benchmark set but countries such as Nigeria and India pledged net zero emissions by 2060 and 2070 respectively; ambitious? Time will tell, it is on this basis that I welcome our readers to Volume 12, number 2, December edition of Environmental Technology and Science Journal (ETSJ). There are 16 articles that cut across topical issues in the built environment. Happy reading!

Past and current editions of the Journal can be found at these web addresses:
<https://etsj.futminna.edu.ng> and
<https://www.ajol.info/index.php/etsj> (Yes, ETSJ on AJOL) for download at no cost.

Let us do it again, peace!

R. A. Jimoh
Managing Editor

Contents

- 1-10 Critical Attributes for Selecting Contractors for Long-term Collaborative Relationships
Ayegba C & Root D
- 11-23 Evaluating Risk Factors of Build-Operate-Transfer Highway Projects in Nigeria
Fabi J. K & Akinseinde O. A
- 24-36 Challenges Encountered by Peri-Urban Women in Landed Property Ownership in Minna
Popoola N. I, Martins I. V, Akanbi M. O & Bamgbade A. A
- 37-47 Evaluating Urban Sprawl and Land Consumption Rate in Ilorin Metropolis Using Multitemporal Landsat Imagery
Idrees M. O, Adepoju B. D, Ipadeola A. O, Omar D. M, Alade A. K & Salami I. B
- 48-57 Assessment of the Relationship between Community Services and Taxpayers' Willingness to Pay Residential Property Tax in Lagos Metropolis
Adepoju A. S, Ajayi M. T. A & Kemiki O. A
- 58-70 Comparative Assessment of SRTM and UAV-Derived Dem in Flood Modelling
Adesina E. A, Musa A, Ajayi O. G, Odumosu J. O, Opaluwa Y. D & Onuigbo I. C
- 71-81 Variation in Land Use Cover and Surface Temperature of Kubwa, Federal Capital Territory, Nigeria
Abbas Y. A, Morenikeji O. O, Dalil M, Ohadugha C. B & Musa H. D
- 82-90 Development of a Forced Convection Electric Fish Drying Machine
Isinkaye J. T, Oghenekaro J. S & Isinkaye O. D
-  91-102 Assessment of the Impact of Participation in Recreational Activities on Mental Health of Participants in Abuja
Mustapha I. O, Muhammad A. Y & Muhammed B. B
- 103-113 Safety Risk Assessment of Building Construction Work Items in Abuja
Mamman E. J, Mohammed D. Y, Shittu A. A & Adamu D. A
- 114-121 Challenges of Housing Development in the Federal Capital City, Abuja
Adidi J. E, Alhassan M. M & Adekiya O. A
- 122-132 Effects of Changing Climate Variables on Residential Building Fabrics in North Central Nigeria
Nsofor C., Zubairu S. N. & Abdulrahman M. E.

classified into active or passive, organized or unstructured, inside, or outdoors, alone or in groups among others. Man's advantages from leisure activities cannot be overstated. This includes reduced social anxiety, lower social isolation, higher social self-concept, increased self-esteem, assists in the development of skills such as leadership, interaction, and communication and offers chances for socializing (Eime *et al*, 2013; Mokaya and Gitari, 2012; Oyerinde *et al*, 2014).

Reasons for participation or non-participation may include time, energy, ability to reach recreational places, fear of criminality, insufficient recreational areas, and poor recreational design elements in recreational facilities (Sava, 2015; Godbey, 2009). In general, social, psychological, economic, and environmental variables may influence whether people participate (Aslan, 2002; Abubakar, 2011). According to a prediction made by the World Health Organization in a discussion paper titled "Mental health, poverty, and development" published in 2009, depression will be the third leading cause of disease burden in low-income countries by 4.7 percent by 2030 and the second highest cause of disease in middle-income countries by 6.7 percent. Due to this, depression and other mental problems are not uncommon. Amongst the studies that emphasized the need for recreation in improving mental health is Lee *et al* (2018) who discussed that leisure activities may reduce the risk of depression in the elderly. Similarly, longitudinal, and cross-sectional studies showed a link between specific social activities, such as attending to the theater and reading magazines, and mental health condition in middle-aged and older people. Misconceptions about the causes of mental illness, on the other hand, have generated stigma and misconceptions about treatment options, leading many communities and people to believe that treatment outside of a hospital is impossible. Recreation, according to many studies' is one of the potential methods to reduce

mental illness and provide psychological and emotional balance in contemporary society. According to Zekiye (2016), inmates' self-esteem and a decreasing negative effect on their loneliness while Lackey *et al* (2019) claim that nature has a beneficial effect on mental health. The results show that nature-based leisure has a significant potential to improve mental outcomes such as well-being, cognition, resilience, and restoration, as well as lower levels of anxiety, depression, and stress. Other studies that support that recreation is beneficial include (Lam *et al* 2017 and Bayazit, 2017). However, current research into the topic has shown that there is a dearth of this kind of research in the studied field. Most research conducted in the study area focused on other aspect of recreation besides its impact on mental health. This is seen in the work of (Bogoro, 2018; Ihuma, *et al* 2016; Enemuo & Obijuru, 2017) among others.

The study set out to answer the following questions considering the issue statement above: What are the nature and motives of recreational participation of participants in Abuja?

To what extent does duration and frequency of participation affect mental health of participants? Does effect of recreational participation vary among participants based on socio-demographics?

The study aimed at assessing the effect of recreational activities on mental health of participants in Abuja. Given the aim, the objectives are to;

- (1) Examine the nature and motive of recreational participation of participants in Abuja
- (2) Analyze the effect of duration and frequency of recreational participation on mental health.
- (3) Determine the variation in effect of participation in recreational activities on the basis on socio-demographics of participants.

CONC

Accor
is "a p
inner
interpe
individ
happin
over o
esteem
play." I
as "sub
efficacy
interger
one's ca
emotion
Organiz
may b
viewpoi
the abse
pleasant
and psy
two typ
negative
character
personali
are regar
esteem, a
sense of
controlla
efficacy.
negative r
World He
the Susta
explain m
in a perso
characteri
emotions,
relationshi

METHOD

This surve
obtain the
participants
activities o
250question
the purpo
population
determined.
technique
administrati

classified into active or passive, organized or unstructured, inside, or outdoors, alone or in groups among others. Man's advantages from leisure activities cannot be overstated. This includes reduced social anxiety, lower social isolation, higher social self-concept, increased self-esteem, assists in the development of skills such as leadership, interaction, and communication and offers chances for socializing (Eime *et al*, 2013; Mokaya and Gitari, 2012; Oyerinde *et al*, 2014).

Reasons for participation or non-participation may include time, energy, ability to reach recreational places, fear of criminality, insufficient recreational areas, and poor recreational design elements in recreational facilities (Sava, 2015; Godbey, 2009). In general, social, psychological, economic, and environmental variables may influence whether people participate (Aslan, 2002; Abubakar, 2011). According to a prediction made by the World Health Organization in a discussion paper titled "Mental health, poverty, and development" published in 2009, depression will be the third leading cause of disease burden in low-income countries by 4.7 percent by 2030 and the second highest cause of disease in middle-income countries by 6.7 percent. Due to this, depression and other mental problems are not uncommon. Amongst the studies that emphasized the need for recreation in improving mental health is Lee *et al* (2018) who discussed that leisure activities may reduce the risk of depression in the elderly. Similarly, longitudinal, and cross-sectional studies showed a link between specific social activities, such as attending to the theater and reading magazines, and mental health condition in middle-aged and older people. Misconceptions about the causes of mental illness, on the other hand, have generated stigma and misconceptions about treatment options, leading many communities and people to believe that treatment outside of a hospital is impossible. Recreation, according to many studies' is one of the potential methods to reduce

mental illness and provide psychological and emotional balance in contemporary society. According to Zekiye (2016), recreation have a rising positive impact on inmates' self-esteem and a decrease in negative effect on their loneliness which Lackey *et al* (2019) claim that nature has a beneficial effect on mental health. The results show that nature-based leisure has a significant potential to improve mental outcomes such as well-being, cognition, resilience, and restoration, as well as lower levels of anxiety, depression, and stress. Other studies that support that recreation is beneficial include (Lam *et al* 2017 and Bayazit, 2017). However, current research into the topic has shown that there is a dearth of this kind of research in the studied field. Most research conducted in the study area focused on other aspect of recreation besides its impact on mental health. This is seen in the work of (Bogoro, 2018; Ihuma, *et al* 2016; Enemuo & Obijuru, 2017) among others.

The study set out to answer the following questions considering the issue statement above: What are the nature and motives of recreational participation of participants in Abuja?

To what extent does duration and frequency of participation affect mental health of participants? Does effect of recreational participation vary among participants based on socio-demographics?

The study aimed at assessing the effect of recreational activities on mental health of participants in Abuja. Given the aim, the objectives are to;

- (1) Examine the nature and motive of recreational participation of participants in Abuja
- (2) Analyze the effect of duration and frequency of recreational participation on mental health.
- (3) Determine the variation in effect of recreational participation in recreational activities on the basis on socio-demographics of participants.

CONCEPT OF MENTAL HEALTH

According to McKay (2012), mental health is "a positive concept that encompasses the inner individual experience as well as interpersonal group experience. To the individual, good mental health means happiness, competence, a sense of control over one's life, positive feelings of self-esteem, and capacities to love, work, and play." Furthermore, mental health is defined as "subjective well-being, perceived self-efficacy, autonomy, competence, intergenerational reliance and awareness of one's capacity to fulfill one's intellectual and emotional potential." (World Health Organization, 2003). Three (3) perceptions may be formed from the preceding viewpoints: (a) Mental health is more than the absence of mental disorders; (b) it entails pleasant emotions and (c) social, emotional, and psychological functioning. There are two types of mental health: positive and negative. Positive mental health is characterized by positive affect and positive personality characteristics, both of which are regarded resources. They have high self-esteem, a strong feeling of mastery, a strong sense of coherence (life is purposeful and controllable), and a strong sense of self-efficacy. (Kenneth, 2014). In terms of negative mental health or mental illness, the World Health Organization's fact sheets on the Sustainable Development Goal (SDG) explain mental disorders "As disturbances in a person's mental health, which are often characterized by a mix of troubled thoughts, emotions, behavior, and interpersonal relationships.

METHODOLOGY

This survey was conducted in Abuja to obtain the perception of recreational participants on impact of recreational activities on mental health. A total of 250 questionnaires were administered using the purposive sampling. Since the population of a recreational site cannot be determined. Simple random sampling technique was employed for the administration of questionnaires. The

questionnaire was administered in City Park, Wuse II Abuja and National stadium (package B), and were selected based on frequent visitation. There was consideration about the population to be interviewed and stratified sampling technique was adopted to cover only respondents from 18 years and above, which constitute major group of people that visit the parks regularly. The questionnaire administered had three different sections which are thus: Socio-demographic and socio-economic characteristics of respondent, section two collected information on the nature and motivations for recreational activities and section three collected information on respondents' recreational participation duration and frequency trend. The other aspect of this section used the General health questionnaire (GHQ-12) to gather information on respondents' perception on the impact of the recreational activities on their mental health. Data was collected at weekend from the hours of 9am to 6pm because, these are one of the periods when visitation to recreational facilities is high due to work free days, people tends to relaxed more during the weekends. The statistical program for social scientists (SPSS) was used to compile and evaluate the data obtained via. A descriptive method was used with basic tables displaying frequencies and percentages. Pearson correlation coefficient and regression analysis are two statistically inferential techniques utilized. The study was helpful in determining the degree to which recreational involvement affects mental health in terms of frequency and length. Also, to see whether there is any difference in the effect that respondents have depending on their socio-demographics.

RESULTS AND DISCUSSION

Analysis of the result obtained from the study shows the perception of people on the impact of participation in recreational activities on mental health of participants in Abuja. 237 questionnaires were retrieved. There was high level of male respondents in

the study area. Male accounted for 53% while female accounted for 47% of the population sampled. This shows that men presented a higher participation level than women. However, the amount of variation is not so much. According to Basoglu (2013), men are more active than women recreational activities although this disparity depends on the type of recreational activities and the intensity of participation. The result from this study therefore supports the theory. The selection of respondents was limited to adults who are between the ages 18 and above. Most of the respondents were

youths between the ages of 25-35years (39.2%). This was followed by respondents with ages between 18-25years (31.2%), the people within the ages of 35-45 years accounted for 18.1% while 6.3% and the remaining 5.1% of the respondents accounted for those that falls within the age bracket of 45-55 years and 55 years above respectively. This study is consistent with the study of Mcguirk (2012) who asserts participation in recreational activities particularly physical activities may decrease according to increase in age. The responses are shown in Figure 1

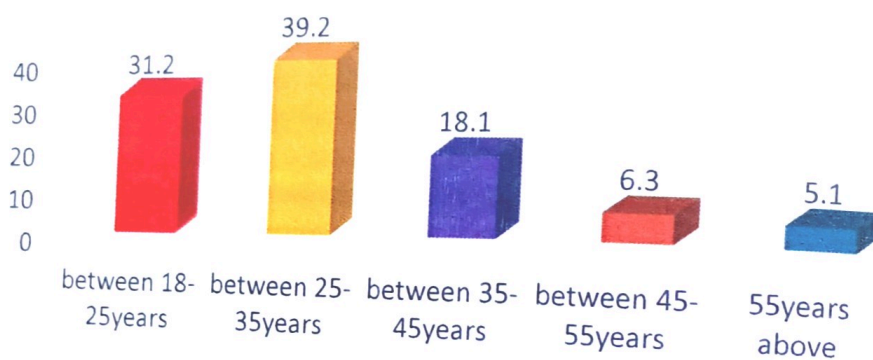


Figure 1: Age of the Respondents

The Occupational status of respondents also revealed that 45% of the respondents were self-employed while 24% of the respondents were students. Furthermore, 19% of the respondents were civil servants and the remaining 12% of the respondent's others such as artisans, coaches and those employed in private organizations. This implies that the self-employed and student population have more free time to participate in recreational activities because they have more control of their time than employees or artisans who have limited control of their time because of other obligation besides their personal obligations.

The level of income indicated that most of the respondent earn above the ₦30,000 minimum wage approved by the federal government. In other words, income is not a constraint towards participation as most respondent can afford expenses that may arise from recreational participation. This study therefore supports Arhadan and Mert (2014) who indicated that income amongst other socio-economic factor could have a positive effect on participation in outdoor recreational activities. In other words, when a person is financially stable, he can engage in recreational activities. This is shown in Figure 2 below

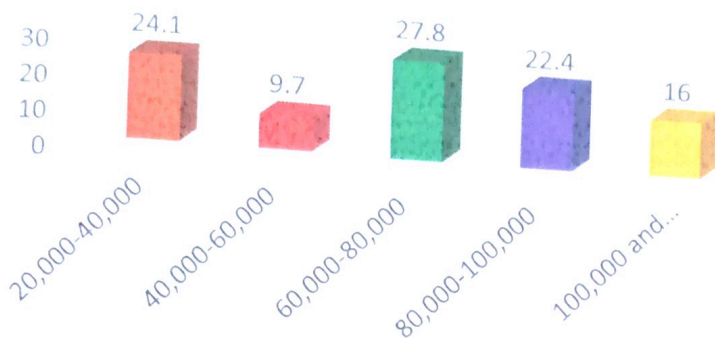


Figure 2: Monthly Income of the Respondents

The marital status of respondent revealed that 48% of the respondents were married while 45% of the respondents were single, and the remaining 7% of the respondents were widowed. This implies both single and married participate in sporting activities in

Nature and Motive for Participation of Residents

Nature of Recreational Activities

Table 1 shows the recreational activities the respondents engaged in. The findings show that majority of the respondents engage in swimming activities 56.1% while (41.4%)

the study area. Based on religion, respondents who are Christians showed a higher percentage by 80% and Muslims accounted for 16% of the respondents. The remaining 4% accounted for others that belongs other religion.

stated otherwise. Those that visited Cinema and other recreational activities identified in the questionnaire accounted for 34.2%, 31.2%, 21.1%, 27%, 16.9%, 20.3%, 28.7% and 41.4% respectively while those that stated otherwise accounted for 41.4% in total.

Table 1: Nature of Recreational Activities

Activities	Yes	No
Swimming	133(56.1%)	104(43.9%)
Visiting a cinema	81(34.2%)	156(65.8%)
Picnicking	74(31.2%)	163(68.8%)
Lawn tennis	50(21.1%)	187(78.9%)
Basketball	64(27%)	173(73%)
Astroturf	40(16.9%)	197(83.1%)
Paint-bailing	48(20.3%)	189(79.7%)
Aerobics	68(28.7%)	169(71.3%)
Others, please specify	98(41.4%)	139(58.65)

Reasons for Participation

It is expressed in Table 2 that, the reasons for participating in the activities which majority identified relaxation as reason for participation (54.2%) followed by to get away stressful situations (23.2%) and being bored and lonely (15.2%). Because it was recommended by a medical practitioner due to medical reasons accounted for 4.2% of

the respondents sampled while the remaining 3.4 % accounted for others. This implies that most of the respondent reason for participation in recreational activities is health related reasons. As such, health factor particularly psychological health factor can be a determinant for participation in recreational activities (Abubakar, 2011).

Table 2 Reasons for participation

Reasons for participation	Frequency	Percent
To get away from stressful situations because am bored and lonely	55	23.2
It helps me to relax	36	15.2
It was recommended by a medical practitioner due to medical reasons	128	54.0
Others	10	4.2
Total	8	3.4
	237	100.0

Participation Duration and Frequency

Duration for Participation

It is evident in Table 3 time spent on recreational activities. The findings revealed that 46.0% of respondents spend between 30minutes-1hour, followed by 30.8% of the respondents who spend between 1hour-2hours. Those that spent between 2hours -3hours accounted 14.8% while those that spend less than 30minutes and 3hours and above accounted for 5.1% and 3.4% of the respondents respectively. This indicates that majority of the

respondent spend at least 30minutes and at most 1-2 hours in recreational activities participation. This may be due to availability of other engagements besides recreational activities. Nevertheless, the duration for participation can be considered as a reasonable amount of time to participate in recreational activities. These findings therefore support the recommendation made by the Canadian Psychological Association (2016) as regards the duration for recreational participation.

Table 3 Duration of Participation

Duration	Frequency	Percent
Less than 30minutes	12	5.1
between 30minutes-1hour	109	46.0
between 1hour-2hours	73	30.8
between 2hours-3hours	35	14.8
3hours and above	8	3.4
Total	237	100.0

Frequency of Participation

As identified in table 4 respondents often participate in the identified recreational activities. Those that participated at least once a week especially on weekends accounted 40.9%, those that participated quarterly accounted for 26.7%, those that participated daily accounted for 18.1% while others (occasionally) accounted for 6.3%. This implies that respondent do not participate in recreational activities daily. As stated by the Canadian Psychological Association (2016), physical activity should be moderate; 30 minutes per day for five or more days per week and vigorous; 20

minutes per day for three or more days per week. Adults aged 18 or older should do at least 150minutes/week of moderate to vigorous intensity exercise with each session lasting at least 10minutes (all adults should also do muscle and bone strengthening exercises at least twice/week) while older adults (65+) with poor mobility should regularly do activities that help to improve balance and prevent falls. For example, yoga. In accordance with this recommendation, this study therefore suggests a daily participation in recreational activities for at least three days or more.

Table 4 Frequency of Participation

Frequency of Participation	Frequency	Percent
Daily	43	18.1
At least once a week	97	40.9
Quarterly	68	28.7
Yearly	14	5.9
Others	15	6.3
Total	237	100.0

Impact of Participation in Recreational Activities on Mental Health Based on the General Health Questionnaire (GHQ-12)

Respondents' information on effect of recreational activities on mental health was gauged using Mean Score analysis. The results of analysis as shown in Table 5 revealed that Feeling reasonably happy was identified as the most significant impact with a mean score 2.52 ranked 1st. followed by losing confidence with a with a mean score 2.17 ranked 2nd. Face up problems was ranked 3rd with a mean score 2.03. While able to concentrate and feeling unhappy and

depressed was ranked in 4th and 5th with mean score 2.02 and 2.00. Capable of making decision, enjoy normal activities, lost much sleep and Under stress were considered as the variables with showing the least effect of participation in recreational activities on mental health in the study area (MS = 1.91,1.86,1.83, and 1.72 ranked 10th to 14 respectively. These results confirmed that the overall level impact of participation in recreational activities on mental health was not more than usual as indicated by the computed MS value of 1.69 that was obtained in Table 5

Table 5 Impact of Participation in Recreational Activities on Mental Health Based on the General Health Questionnaire

Impact	Mean	Rank
Feeling reasonably happy	2.5274	1
Losing confidence	2.1772	2
Face up problems	2.0253	3
Able to concentrate	2.0211	4
Feeling unhappy and depressed	2.0084	5
Thinking of self as worthless	2.0000	6
playing useful part	1.9789	8
Could not overcome difficulties	1.9620	9
Capable of making decision	1.9156	10
Enjoy normal activities	1.8650	11
Lost much of sleep	1.8354	12
Under stress	1.7215	13
Overall	1.69	

Percentage of Recreational Activities impact on Mental Health

The research revealed in Table 6 the impact of recreational activities on mental health of the respondents. The impact was rated from 0 to 100%. The findings revealed that 34.6% of the respondents rated the impact on their

mental health to be between 60% -90%, while 27.0% rated the impact to be between 30%-60%. Also, 20.7% rated the impact to be between 90%-100 while 11% of the respondents rated the impact to be between 10%-30% and the remaining 10% of the respondents rated the impact below 10%.

Table 6: Percentage of Recreational Activities impact on Mental Health

Impact	Frequency	Percent
below 10%	16	6.8
between 10%-30%	26	11.0
30%-60%	64	27.0
60%-90%	82	34.6
90%-100%	49	20.7
Total	237	100.0

Correlation Analysis for Duration of participation and level of impact on mental health

From the correlation analysis, Table7 shows the Pearson product correlation value was positive and low (0.140). The resulting R² value was also low at 14%. Correlation was found to be significant at the 0.031 level. As such, the "R" value of 0.140 indicates a weak relationship between the

duration of participation in recreational activities and level of impact on mental health of the respondents. It was also empirically established that this relationship was statistically significant with P-value 0.031 which is less than 0.05 levels (2-tailed). The coefficient of determination (R²) indicated about 14% relationship between the views of the respondents.

Table 7: Correlation Analysis for Duration of Participation and level of Impact on Mental Health

Correlations	Rate the level of impact		Duration
	Pearson Correlation		
Rate the level of impact		1	.140*
	Sig. (2-tailed)		.031
	N		237
Duration	Pearson Correlation	.140*	1
	Sig. (2-tailed)	.031	
	N	237	237

*. Correlation is significant at the 0.05 level (2-tailed).

Correlation Analysis for frequency of participation and level of impact on mental health

Also, it is evident in Table 8 that the Pearson product correlation value was negative and low (-0.391). The resulting R² value was

also low at 39%. Correlation was found to be significant at the 0.00 level. The "R" value of -0.391 indicates a low relationship between the frequency of participation in recreational activities and level of impact on mental health of the respondents. It was also

empirically established that this relationship was statistically significant with P-value 0.00 which is less than 0.01 levels (2-tailed).

The coefficient of determination (R²) indicated about 39% relationship between the views of the respondents.

Table 8 Correlation Analysis for frequency of participation and level of impact on mental health

Correlations		How often do you participate	Rate the level of impact
How often do you participate	Pearson Correlation	1	-.391**
	Sig. (2-tailed)		.000
	N	237	237
Rate the level of impact	Pearson Correlation	-.391**	1
	Sig. (2-tailed)	.000	
	N	237	237

** . Correlation is significant at the 0.01 level (2-tailed).

Analysis of Socio-demographic characteristics as determinant for Variation in the level of impact on mental health

This section shows the variation in effect of participation in recreational activities on the basis on socio- demographics of respondents using the highest ranked impact (feeling reasonably happy) in the general health questionnaire (GHQ-12) Likert scaling method as the dependent variable and Marital status, Occupation, Gender, Highest Educational attainment, Religion,

Monthly income, and age as predictors (independent variables). The result shows that much of the variance in the dependent variable is explained by the regression model with Multiple R = 0.373, Adjusted R Square = 0.113 and the R Square of 0.139 as shown Table 9. This implies that the regression model used explains about 13.9% of the variance in socio-economic characteristics. The result (F=5.284, P=0.00) also implies that the result is statistically significant at P<0.05 (Table 9).

Table 9: Model Summary

Model	R	R Square	Adjusted R Square	Std. Error of the Estimate
1	.373 ^a	.139	.113	.95201

a. Predictors: (Constant), Marital status, Occupation, Gender, Highest Educational attainment, Religion, Monthly income, and age

Analysis of Variance (ANOVA) and Regression Coefficients of Socio-demographic variable on Mental Health

The analysis of variance (ANOVA) and regression coefficients in Table 10 shows the level of contributions of each predictor in explaining the dependent variable. It can be seen from this result that of the 7 independent variables included in this regression model, 2 were significant predictors of the effect of participation in

recreational activities on mental health of the respondents. The variables in order of importance are religion (Beta = 0.298, T=4.410; P value=0.000); this suggests that religion is the strongest predictor of participation in recreational activities and thus a key contributor to mental health in this survey. Next to it is highest educational attainment (Beta=0.147, T=2.080, P=0.039). While others such as monthly income (Beta=-0.093, T=1.225, P=0.211),

marital status (Beta=0.73, T=0.061P=0.337), gender (Beta=-.006, T=-0.088, P=0.930), occupation (Beta=-0.007, T=-0.104, P=0.917) and age (Beta =-0.040, T=-0.474, P=0.636) are insignificant. In other words, religion and highest educational

attainment are significant in the variation of impact on mental health of respondents' while age, gender, monthly income, marital status and occupation of respondents are insignificant when it comes to variation of impact on their mental health Table 11.

Table 10: ANOVA

Model	Sum of Squares	df	Mean Square	F	Sig.
Regression	33.525	7	4.789	5.284	.000 ^b
Residual	207.547	229	.906		
Total	241.072	236			

a. Dependent Variable: Feeling reasonably happy

b. Predictors: (Constant), Marital status, Occupation, Gender, Highest

Educational attainment, Religion, Monthly income, socio economic and socio demographic characteristics of respondent

Table 11 Regression Coefficients of Socio-demographic variables

Model	Unstandardized Coefficients		Standardized Coefficients	T	Sig.
	B	Std. Error	Beta		
(Constant)	.168	.450		.373	.709
Age	-.037	.079	-.040	-.474	.636
Gender	-.012	.132	-.006	-.088	.930
Religion	.680	.154	.293	4.410	.000
Monthly income	.068	.054	.093	1.255	.211
Occupation	-.005	.046	-.007	-.104	.917
Highest Educational attainment	.313	.151	.147	2.080	.039
Marital status	.092	.095	.073	.961	.337

a. Dependent Variable: Feeling reasonably happy

CONCLUSION AND RECOMMENDATIONS

Recreational activities have been helpful in sustaining mental health stability although it is not without disadvantage. As such, a continuous assessment of its impact on mental health is inevitable. Therefore, the research assessed the impact of participation in the recreational activities on mental health of residents in Abuja. The findings' revealed respondents' have been involved in all the recreational activities at some point in their lives, but the degree of participation is lower than 40%. The most significant reason for participation is for relaxation. These findings verified the overall impact of

recreational activities using the general health questionnaire (GHQ-12). Result from analysis showed that recreation has both a positive and negative impact on mental health although the impact was not more than usual. Most of the participants were male in their youthful age and the level of impact was rated between 60% - 90% by 50% of the respondents'. Further analysis revealed that frequency and duration of participation in recreational activities is statistically significant to its impact on mental health. The level of significance is however weak/low by 39% and 14% respectively. Similarly, religion and highest educational attainment show a significant

relationship to the variation of impact experienced by respondents while Age, gender, occupation, monthly income, and marital status are insignificant to the impact on mental health of the various respondents. In view of the findings of the study, the study recommends that there should be sustained advocacy campaigns through collaborative efforts of the government, non-governmental organizations, faith and community-based organizations using symposia, workshops, and the radio to enlighten the public on the importance and disadvantages of recreation. Since, engaging in regular recreational and sports activities over extended periods of time is said to be effective in eliminating the depressive and health. Therefore, individuals particularly females and the elderly should develop the attitude of engaging in recreational activities for at least 30minutes per day. Furthermore, Government and recreation planners should establish policies that would incorporate recreational activity participation across various sectors. Recreation planners should establish plans that would encourage active recreation across the nation. In addition, Private organizations should also incorporate recreation into working environment to ease employees from stress and to ensure mental stability.

REFERENCES

- Abubakar, I. J. (2011). *Demand estimation for outdoor recreational activities in Kaduna Metropolis*.
- Adesoye, A.A & Ajibua, M.A (2015). Exploring the concept of leisure and its impact on quality of life: *American Journal of Social Science Research* 1(2), 75-84.
- Ardahan, F. & Mert, M. (2014). Factors affecting individuals' participation in cycling, mountaineering and trekking: An application of probity analysis for Turkey case. *Pamukkale Journal of Sport Sciences* 5(1), 128-150.
- Basoglu (2013). Relationships between participation in recreational activities and leadership behavior: A study on the secondary School students. *Turkish Journal of Sport and Exercise*; 15(2), 100-106.
- Betul, B. (2017). The effect of recreational activities on self-esteem development of girls in adolescence. *Academic Journals*, 9(20), 920-924.
- Bogoro, A. G. (2018). Provision of recreational facilities in Asokoro District, Abuja. *International Journal of Trend in Scientific Research & Development*, 2(6), 90-102.
- Department of Parks and Recreation (DPR). (1994). *California outdoor recreation plan- 2005* Sacramento, CA: California State Parks.
- World Health Organization, Geneva (2003). Department of Mental Health and Substance Dependence, None communicable Diseases and Mental Health
- Enemuo, O.B & Obijum, G (2017). Assessment of magic land amusement park in Abuja as a flagship tourist attraction. *International Journal of Research in Tourism & Hospitality*, 3(2), 1-14.
- Mcguirk, E. (2012). Physical activity, its relationship with psychological well-being & self-perception & in keeping us all psychological healthier. Department of Psychology 1-70.
- Godbey. G. (2009). Outdoor recreation, health and wellness; understanding and enhancing the relationship.
- Oyerinde *et al* (2014). Physical education fitness activities & recreation as instrument of socialization. *Arabian Journal of Business & Management Review*, 3(9), 118-123.
- Ihuma, Tells, Madakan & Akpan (2016). *Journal of research on Forestry, Wildlife & Environment*, 8(1)1-13.
- Kennett, R. F (2014). The influence of physical activity on mental well-being, department of exercise & health