

**AN AUTOMATED SOLUTION FOR  
LINEAR ALGEBRAIC SYSTEMS**

*BY*

**AUDU UMARU OMESA**  
*PGD/MCS/2001/1091*

**DEPARTMENT OF MATHEMATICS AND  
COMPUTER SCIENCE  
F. U. T, MINNA**

**NOVEMBER 2003.**

## CHAPTER ONE

### 1.0 BACKGROUND TO THE STUDY

#### 1.1 INTRODUCTION

The study of systems of linear equations and their solutions is one of the major topics and plays an important role in linear Algebra. In recent years, linear Algebra has become an essential part of the mathematical background required of mathematicians, engineers, physicists and other scientists. This requirement reflects the importance and wide applications of the subject matter.

However, in practical application of linear equations, the need for automated procedures is very necessary and important. Some methods for performing computations are directly applicable to the computer solution of large – scale problems that arise in real – world application, while some methods are not directly applicable. On the basis of this, we shall limit ourselves to those methods that are applicable and consider the methods of solutions to systems of linear equation using Gauss-Jordan elimination methods and Gaussian elimination methods with back-substitution.

##### 1.1.1 LINEAR EQUATION

We can represent a line in the  $xy$ -plane algebraically by an equation of the form:

$$a_1x + a_2y = b.$$

An equation of this kind is called a linear equation in the variables  $x$  and  $y$ . In general terms, we define a linear equation in the  $n$  variables  $x_1, x_2, \dots, x_n$  to be one that can be expressed in the form.

$$a_1x_1 + a_2x_2 + \dots + a_nx_n = b \text{ ----- (1)}$$

where the scalars  $a_1, a_2, \dots, a_n$  (called the coefficient of the  $x_i$ 's) and  $b$  are constants. The variables (Indeterminates) in a linear equation are also called unknowns.

A solution of a linear equation (1) is a sequence of  $n$  numbers  $S_1, S_2, \dots, S_n$  such that the equation is satisfied when we substitute  $x_1 = s_1, x_2 = s_2, \dots, x_n = s_n$ . The set of all solutions of the equation is called the general solution of the equation.

Solutions of the equation (1) can be easily described and obtained. There are three cases:

CASE 1 one of the coefficients in (1) is not zero, say  $a_1 \neq 0$

If we rewrite equation (1) as follows

$$a_1 x_1 = b - a_2 x_2 - \dots - a_n x_n$$
$$x_1 = a_1^{-1} b - a_1^{-1} a_2 x_2 - \dots - a_1^{-1} a_n x_n$$

Then by arbitrarily assigning values to the unknowns  $x_2, \dots, x_n$  we obtain a value for  $x_1$ . These values form a solution of the equation.

However, the linear equation in one unknown

$$ax = b \text{ with } a \neq 0$$

Has unique solution  $x = a^{-1}b$ .

CASE (ii) All the coefficients in (1) are zero, but the constant is not zero. Thus, the equation is of the form

$$0x_1 + 0x_2 + \dots + 0x_n = b \quad \text{with } b \neq 0,$$

then the equation has no solution.

CASE (iii) All the coefficients in (1) are zero and the constant is also zero, that is, the equation is of the form

$$0x_1 + 0x_2 + \dots + 0x_n = 0$$

Then every  $n$ -tuple of scalars in  $R$  is a solution of the equation.

### 1.1.2 LINEAR SYSTEMS:

A finite set of linear equations in the variables  $x_1, x_2, \dots, x_n$  is called a system of linear equations or simply a linear system.

### 1.1.3 SYSTEM OF LINEAR EQUATIONS

An arbitrary system of  $m$  linear equation in  $n$  unknowns will be written as



## 1.8 DEFINITION OF TERMS

### ROUND OFF ERROR

Since computers are limited in the number of decimal places they can carry, they round off or truncate most numerical quantities. A computer designed to store eight decimal places might record  $2/3$  either as .66666667 (rounded off) or .666666 (Truncated). In either case, an error is introduced and is called round off error.

### AUTOMATION

The Oxford Advanced Learners Dictionary define this as the use of automatic machines and equipments to do work previously done by people.

## CHAPTER TWO

### 2.0 LITERATURE REVIEW

#### 2.1 SOLUTION OF A SYSTEM OF LINEAR EQUATIONS.

As already stated, an arbitrary system of  $m$  linear equation in  $n$  unknowns will be written as

$$\begin{aligned} a_{11}x_1 + a_{12}x_2 + \dots + a_{1n}x_n &= b_1 \\ a_{21}x_1 + a_{22}x_2 + \dots + a_{2n}x_n &= b_2 \\ \dots & \dots\dots\dots 2.1.1 \\ \dots & \dots\dots\dots \\ a_{m1}x_1 + a_{m2}x_2 + \dots + a_{mn}x_n &= b_m \end{aligned}$$

where  $x_1, x_2, \dots x_n$  are the unknowns and the subscripted  $a$ 's and  $b$ 's denote constants.

Considering the above systems of linear equation, the basic method for solving a system like this is to replace the given system by a new system that has the same solution set but which is easier to solve. This new system is generally obtained in a series of steps by applying the following three types of operations to eliminate unknowns systematically.

- (1) Multiply an equation through by a nonzero constant
- (2) Interchange two equations
- (3) Add a multiple of one equation to another.

This procedure can also be stated as follows

To reduce the system of linear equation to a simpler system follow the following procedure

Step 1 interchange equations so that the first unknown  $x_1$  has a nonzero coefficient in the first equation, that is, so that  $a_{11} \neq 0$

Step 2 for each  $i > 1$ , apply the operation

Thus the original system has been reduced to the following equivalent system

$$2x + 4y - z + 2v + 2w = 1$$

$$5z - 8v + 2w = -17$$

$$3z + v - 5w = 1$$

Observed that  $y$  has also been eliminated from the second and third equations. Here the unknown  $Z$  plays the role of the unknown  $X_{j_2}$  above.

Note that the above equations, excluding the first, form a sub system which has fewer equations and fewer unknowns than the original system (equation 1).

We also note that

(1) If an equation  $0x_1 + 0x_2 + \dots + 0x_n = b, b \neq 0$  occurs then the system is inconsistent and has no solution.

(2) If an equation  $0x_1 + 0x_2 + \dots + 0x_n = 0$  occurs, then the equation can be deleted without affecting the solution.

Continuing the above process with each new "smaller" subsystem, we obtain by induction that the system (equation 1) is either inconsistent or is reducible to an equivalent system in the following form

$$\begin{aligned} a_{11}x_1 + a_{12}x_2 + a_{13}x_3 + \dots + a_{1n}x_n &= b_1 \\ a_{2j_2}x_{j_2} + a_{2j_2+1}x_{j_2+1} + \dots + a_{2n}x_n &= b_2 \\ \dots & \\ a_{rj_r}x_{j_r} + a_{rj_r+1}x_{j_r+1} + \dots + a_{rn}x_n &= b_r \end{aligned} \tag{2.3}$$

where  $1 < j_2 < \dots < j_r$  and where the leading coefficients are not zero:  $a_{11} \neq 0, a_{2j_2} \neq 0 \dots a_{rj_r} \neq 0$ .

For notational convenience we use the same symbols  $a_{ij}, b_k$  in the system (2.3) as we used in the system (2.1), but clearly they may denote different scalars.

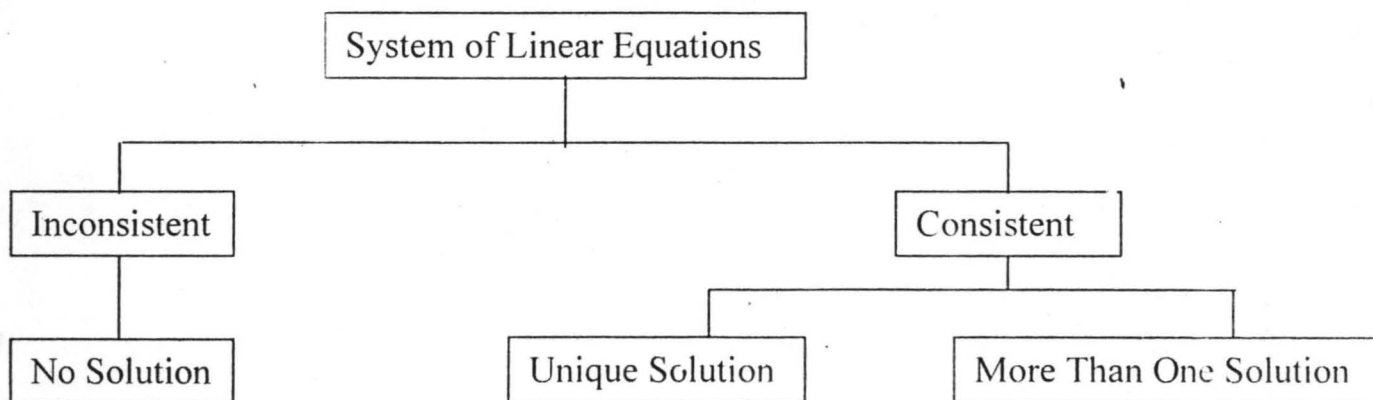
**DEFINITION:** The above system (2.3) is said to be in echelon form; the unknowns  $x_i$  which do not appear at the beginning of any equation ( $i \neq 1, j_2, \dots, j_r$ ) are termed free variables.

**THEOREM:** The solution of the system (2.3) in echelon form is as follows. There are two cases

(i)  $r=n$  that is, there are as many equations as unknowns. Then the system has a unique solution.

(ii)  $r < n$ . That is, there are fewer equations than unknowns. Then we can arbitrarily assign values to the  $n-r$  free variables and obtain a solution of the system.

**NOTE:** The above theorem, in particular, implies that the system (2.3) and equivalent systems are consistent. Thus if the system (2.1) is consistent and reduces to case (ii) above, then we can assign many different values to the free variables and so obtain many solutions of the system. The following diagram illustrates this situation.



**Figure 1**

**REMARK:** We find the general solution of the system in the above example as follows:

Let the free variables be assigned arbitrary values

say  $y=a$ , and  $w=b$

Substituting  $w=b$  into the second equation we obtain

$$z = 1 + 2b$$

Putting  $y=a$ ,  $z=1+2b$  and  $w=b$  in the first equation,

$$\text{we find } x = 4 - 2a + b$$

Thus the general solution of the system is

$$X = 4 - 2a + b$$

$$Y = a$$



$$Z = 1 + 2b$$

$$W = b$$

In other words,  $(4 - 2a + b, a, 1 + 2b, b)$ , where  $a$  and  $b$  are arbitrary numbers. Frequently the general solution is left in terms of the free variables  $y$  and  $w$  (instead of  $a$  and  $b$ ) as follows;

$$X = 4 - 2y + w \quad Z = 1 + 2w \text{ or } (4 - 2y + w, y, 1 + 2w, w)$$

## 2.2 SOLUTION OF A HOMOGENEOUS SYSTEM OF LINEAR EQUATION

A system of linear equations is said to be homogeneous if all the constant terms are zero: that is the system is of the form:

$$a_{11}x_1 + a_{12}x_2 + \dots + a_{1n}x_n = 0$$

$$a_{21}x_1 + a_{22}x_2 + \dots + a_{2n}x_n = 0$$

.....

.....

$$a_{m1}x_1 + a_{m2}x_2 + \dots + a_{mn}x_n = 0$$

Every homogeneous system of linear equations is consistent, since all such system have  $x_1 = 0, x_2 = 0, \dots, x_n = 0$  as a solution. This solution is called the trivial solution; if there are other solutions, they are called nontrivial solution.

Since homogeneous systems of linear equation is clearly consistent, it can always be reduced to an equivalent homogeneous system in echelon form:

$$a_{11}x_1 + a_{12}x_2 + a_{13}x_3 + \dots + a_{1n}x_n = 0$$

$$a_{2j_2}x_{j_2} + a_{2j_2+1}x_{j_2+1} + \dots + a_{2n}x_n = 0$$

.....

$$a_{rj_r}x_{j_r} + a_{rj_r+1}x_{r+1} + \dots + a_{rn}x_n = 0$$

Here we have the two possibilities.

(i)  $r = n$ . Then the system has only the zero solution (trivial solution)

(ii)  $r < n$ . Then the system has a non-zero solution (non-trivial solution)

If we begin with fewer equations than unknowns then, in echelon form  $r < n$  and hence the system has a nonzero solution, that is ,

**THEOREM:** A homogeneous system of linear equations with more unknowns than equations has a non-zero solution.

Simply stated, for a homogeneous system of linear equations, exactly one of the following is true:

- (i) The system has only the trivial solution
- (ii) The system has infinitely many non-trivial solutions in addition to the trivial solution.

For example, the homogeneous system

$$x + 2y - 3z + w = 0$$

$$x - 3y + z - 2w = 0$$

$$2x + y - 3z + 5w = 0$$

has a non zero solution since there are four unknowns but only three equations.

## 2.3 GAUSSIAN ELIMINATION

### 2.3.1 AUGMENTED MATRIX

We shall consider the general case of the system of linear equation, thus,

$$a_{11}x_1 + a_{12}x_2 + \dots + a_{1n}x_n = b_1$$

$$a_{21}x_1 + a_{22}x_2 + \dots + a_{2n}x_n = b_2$$

.....

$$a_{m1}x_1 + a_{m2}x_2 + \dots + a_{mn}x_n = b_m$$

This system of  $m$  linear equations in  $n$  unknowns can be abbreviated by writing only the rectangular array of numbers

$$\left[ \begin{array}{cccc} a_{11} & a_{12} & \dots & a_{1n} & b_1 \\ a_{21} & a_{22} & \dots & a_{2n} & b_2 \\ \dots & \dots & \dots & \dots & \dots \\ a_{m1} & a_{m2} & \dots & a_{mn} & b_m \end{array} \right]$$

This is called the augmented matrix for the system. (The term matrix is used in mathematics to denote a rectangular array of numbers)

For example, the augmented matrix for the system of equations

$$x_1 + x_2 + 2x_3 = 9$$

$$2x_1 + 4x_2 - 3x_3 = 1$$

$$3x_1 + 6x_2 - 5x_3 = 0$$

is

$$\begin{bmatrix} 1 & 1 & 2 & 9 \\ 2 & 4 & -3 & 1 \\ 3 & 6 & -5 & 0 \end{bmatrix}$$

### 2.3.2 ELEMENTARY ROW OPERATIONS

As stated above, the basic method for solving a system of linear equations is to replace the given system by a new system that has the same solution set but which is easier to solve. This new system is generally obtained in a series of steps by applying the following three types of operations to eliminate unknowns systematically

- (i) Multiply an equation through by a non-zero constant
- (ii) Interchange two equations
- (iii) Add a multiple of one equation to another.

Since the rows (horizontal lines) of an augmented matrix correspond to the equations in the associated system, these three operations correspond to the following operations on the rows of the augmented matrix.

- (i) Multiply a row through by a non-zero constant
- (ii) Interchange two rows
- (iii) Add a multiple of one row to another.

These are called elementary row operations.

### 2.3.3 REDUCED ROW – ECHELON FORM

In this section, a systematic procedure for solving systems of linear <sup>equation</sup> is given.

It is based on the idea of reducing the augmented matrix to a form that is simple enough that the system of equations can be solved by inspection.

Solution to the given linear system (2.3.1a) by reducing the augmented

(i) An elementary matrix of the FIRST KIND, is an  $n \times n$  diagonal matrix  $Q$ , formed by taking the identity matrix  $I$  and replacing the  $i$ th diagonal element with a non zero constant  $q$ . for example, with  $n=4$  and  $i=3$

$$Q = \begin{bmatrix} 1 & 0 & 0 & 0 \\ 0 & 1 & 0 & 0 \\ 0 & 0 & q & 0 \\ 0 & 0 & 0 & 1 \end{bmatrix}$$

Note that  $\det. Q = q$  and that the inverse matrix  $Q^{-1} = \text{diag. } (1, 1, 1/q, 1)$  is again like  $I$ , this time will  $1/q$  in the  $i$ th diagonal form.

2. An elementary matrix of the SECOND KIND is an  $n \times n$  matrix  $R$ , formed by interchanging any two rows  $i$  and  $j$  for  $I$ . For example, with  $n = 4$ ,  $i = 1$  and  $j = 3$

$$R = \begin{bmatrix} 0 & 0 & 1 & 0 \\ 0 & 1 & 0 & 0 \\ 1 & 0 & 0 & 0 \\ 0 & 0 & 0 & 1 \end{bmatrix}$$

Note that  $\det. R = -1$ , and that  $R$  is self-inverse, that is,  $RR=1$

3. An elementary matrix of the THIRD KIND is an  $n \times n$  matrix  $S$ , formed by inserting a non-zero constant  $s$  into the  $i, j$  ( $i \neq j$ ) element of  $I$ . (This may also be construed as taking  $I$  and adding a multiple  $s$  of each element in row  $j$  to the corresponding element in row  $i$ ) for example with  $n=4$ ,  $i=3$ ,  $j=1$

$$S = \begin{bmatrix} 1 & 0 & 0 & 0 \\ 0 & 1 & 0 & 0 \\ s & 0 & 1 & 0 \\ 0 & 0 & 0 & 1 \end{bmatrix}$$

Note that  $\det. S=1$

Premultiplication of an arbitrary  $n \times p$  matrix  $A$  by one of these elementary matrices produces an ELEMENTARY TRANSFORMATION of  $A$ , also termed an

elementary row operation, on A. As example, we form the products QA, RA, and SA with  $n=3$ ,  $i=2$ ,  $j=3$  and  $p=4$

$$1. \quad QA = \begin{bmatrix} 1 & 0 & 0 \\ 0 & q & 0 \\ 0 & 0 & 1 \end{bmatrix} \begin{bmatrix} a_{11} & a_{12} & a_{13} & a_{14} \\ a_{21} & a_{22} & a_{23} & a_{24} \\ a_{31} & a_{32} & a_{33} & a_{34} \end{bmatrix}$$

$$= \begin{bmatrix} a_{11} & a_{12} & a_{13} & a_{14} \\ qa_{21} & qa_{22} & qa_{23} & qa_{24} \\ a_{31} & a_{32} & a_{33} & a_{34} \end{bmatrix}$$

$$2. \quad RA = \begin{bmatrix} 1 & 0 & 0 \\ 0 & 0 & 1 \\ 0 & 1 & 0 \end{bmatrix} \begin{bmatrix} a_{11} & a_{12} & a_{13} & a_{14} \\ a_{21} & a_{22} & a_{23} & a_{24} \\ a_{31} & a_{32} & a_{33} & a_{34} \end{bmatrix}$$

$$= \begin{bmatrix} a_{11} & a_{12} & a_{13} & a_{14} \\ a_{31} & a_{32} & a_{33} & a_{34} \\ a_{21} & a_{22} & a_{23} & a_{24} \end{bmatrix}$$

$$3. \quad SA = \begin{bmatrix} 1 & 0 & 0 \\ 0 & 1 & s \\ 0 & 0 & 1 \end{bmatrix} \begin{bmatrix} a_{11} & a_{12} & a_{13} & a_{14} \\ a_{21} & a_{22} & a_{23} & a_{24} \\ a_{31} & a_{32} & a_{33} & a_{34} \end{bmatrix}$$

$$= \begin{bmatrix} a_{11} & a_{12} & a_{13} & a_{14} \\ a_{21} + sa_{31} & a_{22} + sa_{32} & a_{23} + sa_{33} & a_{24} + sa_{34} \\ a_{31} & a_{32} & a_{33} & a_{34} \end{bmatrix}$$

It is apparent that pre-multiplication by elementary matrices produces the following transformations of A

1 QA: Multiplication of all elements of one row by a scalar.

- 2 RA: Interchange of rows
- 3 SA: Addition of a scalar multiple of elements of one row to the corresponding elements of another row.

Observe that in each case the original elementary matrix can be formed from the identity matrix  $I$  by manipulating it exactly as we wish to have  $A$  manipulated.

Post-Multiplication of an arbitrary  $p \times n$  matrix  $A$  by one of the elementary matrices is called an ELEMENTARY COLUMN OPERATION. The three types of operations produce the following results:

- 1 AQ: Multiplication of all elements of one column by a scalar.
- 2 AR: Interchange of two columns.
- 3 AS: Addition of a scalar Multiple of elements of one column to the corresponding elements of another column.

If  $A$  is any matrix and  $T$  is the matrix, resulting from elementary row or column operations on  $A$ .  $T$  and  $A$  are termed EQUIVALENT MATRICES. For the examples given above if  $A$  is a SQUARE matrix.

$$\text{Det. (QA)} = \text{Det. Q} \times \text{det A} = q \text{ det. A}$$

$$\text{Det. (RA)} = \text{Det. R} \times \text{det. A} = - \text{det A}$$

$$\text{Det. (SA)} = \text{Det. S} \times \text{det. S} \times \text{det A} = \text{det. A}$$

Thus, multiplication of all the elements of one row of a square matrix by a scalar also multiplies the determinant of the matrix by that scalar. Interchange of two rows changes the sign of the determinant (but not its magnitude) and addition of a scalar multiple of elements of one row to the corresponding elements of another row has no effect on the determinant.

Clearly, the product of elementary matrices is non-singular, for each component has an inverse. It is also true that every non-singular matrix can be written as a product of elementary matrices.

## 2.4.2 GAUSSIAN ELIMINATION

The direct methods of solving equations 2.4 are based on manipulations using the techniques expressed by the elementary matrices of 2.4.1. We now describe one such method, known as Gaussian elimination.

Consider a general system of three linear equations;

$$\begin{aligned} b_{11}x_1 + b_{12}x_2 + b_{13}x_3 &= u_1 \\ b_{21}x_1 + b_{22}x_2 + b_{23}x_3 &= u_2 \quad \dots\dots\dots 2.5 \\ b_{31}x_1 + b_{32}x_2 + b_{33}x_3 &= u_3 \end{aligned}$$

As a first step, replace the second equation by the result of adding to it the first equation multiplied by  $-b_{21}/b_{11}$ . Similarly, replace the third equation by the result of adding to it the first equation multiplied by  $-b_{31}/b_{11}$ . The result is the system

$$\begin{aligned} b_{11}x_1 + b_{12}x_2 + b_{13}x_3 &= u_1 \\ b'_{22}x_2 + b'_{23}x_3 &= u'_2 \quad \dots\dots\dots 2.5.1 \\ b'_{32}x_2 + b'_{33}x_3 &= u'_3 \end{aligned}$$

In which the  $b'$  and  $u'$  are the new coefficients resulting from the above manipulations. Now multiply the second equation of (2.5.1) by  $-b'_{32}/b'_{22}$ , and add the result to the third equation of (2.5.1). The result is the triangular system.

$$\begin{aligned} b_{11}x_1 + b_{12}x_2 + b_{13}x_3 &= u_1 \\ b'_{22}x_2 + b'_{23}x_3 &= u'_2 \quad \dots\dots\dots 2.5.2 \\ b''_{33}x_3 &= u''_3 \end{aligned}$$

In which  $b''_{33}$  and  $u''_3$  result from the arithmetic operations. The system (2.5.2) is readily solved by the process of BACK SUBSTITUTION, in which  $x_3$  is obtained from the last equation; this allows  $x_2$  to be obtained from the second equation, and then  $x_1$  can be found from the first equation.

The above method seems primitive at a first glance, but by the time it has been made suitable for implementation by automatic machines, it furnishes a powerful tool not only for solving equation (2.5), but also for finding the inverse of the related matrix of coefficients  $B$ , the determinant of  $B$ , the adjoint of  $B$  etc.

In so far as reaching (2.5.2) is concerned, all can be explained in terms of elementary matrices of the third kind. Note that matrices alone suffice, the presence

of  $x_1$ ,  $x_2$ , and  $x_3$  being superfluous. Define an AUGMENTED MATRIX  $C$  consisting of the original coefficient matrix  $B$  with the right-hand side vector  $U$  appended to it.

That is

$$C = [B|U] = \left[ \begin{array}{ccc|c} b_{11} & b_{12} & b_{13} & u_1 \\ b_{21} & b_{22} & b_{23} & u_2 \\ b_{31} & b_{32} & b_{33} & u_3 \end{array} \right]$$

In which the broken line denotes matrix partitioning. Also define three elementary matrices of the third kind:

$$S_1 = \left[ \begin{array}{cccc} 1 & 0 & 0 & 0 \\ -b_{22}/b_{11} & 1 & 0 & 0 \\ 0 & 0 & 1 & 0 \end{array} \right]$$

$$S_2 = \left[ \begin{array}{cccc} 1 & 0 & 0 & 0 \\ 0 & 1 & 0 & 0 \\ -b_{31}/b_{11} & 0 & 1 & 0 \end{array} \right]$$

$$S_3 = \left[ \begin{array}{ccc|c} 1 & 0 & 0 & 0 \\ 0 & 1 & 0 & 0 \\ 0 & -b_{32}^1/b_{22}^1 & 1 & 0 \end{array} \right]$$

The operations producing (2.5.2) from (2.5) can then be expressed as

$$S_3 S_2 S_1 C = \left[ \begin{array}{ccc|c} b_{11} & b_{12} & b_{13} & u_1 \\ 0 & b_{22}^1 & b_{23}^1 & u_2^1 \\ 0 & 0 & b_{33}^{11} & u_3^{11} \end{array} \right]$$

The back-substitution is expressed in terms of premultiplication by elementary matrices of the first and third kinds. Let  $Q_1$ ,  $Q_2$  and  $Q_3$  denote the three matrices of the first kind which are needed. For example,

$$Q_1 = \left[ \begin{array}{ccc} 1 & 0 & 0 \\ 0 & 1 & 0 \\ 0 & 0 & 1/b_{33}^{11} \end{array} \right]$$



Then, with three more matrices of the third kind, which we call  $S_4$ ,  $S_5$  and  $S_6$ , the complete sequence of operations results in

$$Q_3 S_6 S_5 Q_2 S_4 Q_1 S_3 S_2 S_1 C = \begin{bmatrix} 1 & 0 & 0 & x_1 \\ 0 & 1 & 0 & x_2 \\ 0 & 0 & 1 & x_3 \end{bmatrix}$$

Let  $E$  denote the product of these nine elementary matrices. Then  $EC = E[B|U] = [I|X]$ , where  $EB = I$  and  $E = B^{-1}$ . Hence, as a by product of solving equations such as (2.5) by elimination, we see that proper planning can produce  $B^{-1}$ . Clearly, we need not solve equations at all if only the inverse is needed, for in that event the column  $u$  is superfluous,

Since  $EB = I$ ,  $\det. (E) \det. (B) = \det. (I) = 1$  from (2.4.1) the determinant of any  $S$  or third-kind elementary matrix is unity, whereas the determinant of a  $Q$  or first-kind matrix equals the value of that diagonal element which is usually not unity. Hence  $\det. (E) = \det. (Q_3) \times \det. (Q_2) \det. (Q_1)$ . That is  $\det. (E)$  is the product of the diagonal elements (such as  $1/b_{33}$ ) of the matrices  $Q_1$ ,  $Q_2$  and  $Q_3$  used in the elimination process. This means that  $\det. (B)$  is the product of their reciprocals.

The above arithmetic operations can be separated into two types:

- (a) NORMALIZATION steps in which the diagonal elements are converted to unity.
- (b) REDUCTION steps in which the off-diagonal elements are converted to zero.

Note that by augmenting the coefficient matrix with several right-hand side vectors, we can solve several sets of simultaneous equations, each having the same coefficient matrix, at little extra computational cost.

Example: consider the system of equations

$$2x_1 - 7x_2 + 4x_3 = 9$$

$$x_1 + 9x_2 - 6x_3 = 1$$

$$-3x_1 + 8x_2 + 5x_3 = 6$$

for which the solution is  $X_1 = 4$ ,  $X_2 = 1$  and  $X_3 = 2$ . The augmented matrix

[B U I] will be formed and the Gaussian elimination procedure just described will be carried out, except that the normalization steps will be introduced in a somewhat different order. Starting with the matrix

$$\begin{bmatrix} 2 & -7 & 4 & 9 & 1 & 0 & 0 \\ 1 & 9 & -6 & 1 & 0 & 1 & 0 \\ -3 & 8 & 5 & 6 & 0 & 0 & 1 \end{bmatrix}$$

We multiply the top row by  $\frac{1}{2}$  add  $-1$  times the new first row to the second, and 3 times the new first row to the third row. The result is

$$\begin{bmatrix} 1 & -7/2 & 2 & 9/2 & 1/2 & 0 & 0 \\ 0 & 25/2 & -8 & -7/2 & -1/2 & 1 & 0 \\ 0 & -5/2 & 11 & 39/2 & 3/2 & 0 & 1 \end{bmatrix}$$

2.5.3

This is equivalent to having formed the equations

$$x_1 - 7/2x_2 + 2x_3 = 9/2$$

$$25/2x_2 - 8x_3 = -7/2$$

$$-5/2x_2 - 11x_3 = 39/2$$

Note that the operations performed are equivalent to the matrix multiplication

$$\begin{bmatrix} 1/2 & 0 & 0 \\ -1/2 & 1 & 0 \\ 3/2 & 0 & 1 \end{bmatrix} \begin{bmatrix} 2 & -7 & 4 & 9 & 1 & 0 & 0 \\ 1 & 9 & -6 & 1 & 0 & 1 & 0 \\ -3 & 8 & 5 & 6 & 0 & 0 & 1 \end{bmatrix}$$

which yields as a result

$$\begin{bmatrix} 1 & -7/2 & 2 & 9/2 & 1/2 & 0 & 0 \\ 0 & 25/2 & -8 & -7/2 & -1/2 & 1 & 0 \\ 0 & -2/5 & 11 & 39/2 & 3/2 & 0 & 1 \end{bmatrix}$$

Returning to 2.5.3 multiply the second row by  $2/25$  and then add  $5/2$  times the new second row to the third row. The result is

$$\begin{bmatrix} 1 & -7/2 & 2 & 9/2 & 1/2 & 0 & 0 \\ 0 & 1 & -16/25 & -7/25 & -1/25 & 2/25 & 0 \\ 0 & 0 & 47/5 & 94/5 & 7/5 & 1/5 & 1 \end{bmatrix}$$

The forward course has now been completed and corresponding to 2.2 we may write

$$x_1 - 7/2x_2 + 2x_3 = 9/2$$

$$x_2 - 16/25x_3 = -7/25$$

$$47/5x_3 = 94/5$$

To carry out the back substitution, start by multiplying the last row by 5/47. Then multiply the new last row by 16/25 and add to the second row. Multiply this same last row by -2 and add to the first row. The result is

$$\begin{bmatrix} 1 & -7/2 & 0 & 1/2 & 19/94 & -2/47 & -10/47 \\ 0 & 1 & 0 & 1 & 13/235 & 22/235 & 16/235 \\ 0 & 0 & 1 & 2 & 7/47 & 1/47 & 5/47 \end{bmatrix}$$

Finally, Multiply the second row by 7/2 and add to the first. The result is

$$\begin{bmatrix} 1 & 0 & 0 & 4 & 93/235 & 67/235 & 6/235 \\ 0 & 1 & 0 & 1 & 13/235 & 12/235 & 16/235 \\ 0 & 0 & 1 & 2 & 7/47 & 1/47 & 5/47 \end{bmatrix}$$

This means, of course, that  $x_1 = 4$ ,  $x_2 = 1$ ,  $x_3 = 2$  and the inverse of the matrix of coefficients is

$$\begin{bmatrix} 93/235 & 67/235 & 6/235 \\ 13/235 & 22/235 & 16/235 \\ 7/47 & 1/47 & 5/47 \end{bmatrix}$$

The determinant of the coefficient matrix B equals the product of the reciprocals of the diagonal elements appearing in the Q-type matrices involved in the above transformation.

Inspection shows that the relevant diagonal elements are simply the multiplying factors used in the normalization steps, so that

$$\text{Det. } B = \left[ \frac{1}{2} \times \frac{2}{25} \times \frac{5}{47} \right]^{-1} = 235$$

iii. The method of transmission has been in practice for a very long time.

### 3.3 FEASIBILITY STUDY

In order to design a new system, the developer of the system must first of all embark on reasonable feasibility study. It is therefore, very paramount for this study.

Feasibility study focuses at the existing methods of solutions to linear systems or the system currently in use. It also highlights problems associated with the system and designing an alternative approach for the system. This is achieved by gathering and interpreting data in order to evolve proper understanding of the system, diagnose the problem associated with it and proffering solutions. This outcome is used to determine what must be done to solve the problems of the existing old system.

The existing system may be manual or partially automated. To this effect, other possibilities or alternatives may be outlined, compiled, with the cost – benefit analysis of the option and a recommendation of the solution to the management.

### 3.4 PROJECT FEASIBILITY.

For the purpose of this study, the existing system of solution to systems of linear equation and the automated version using pascal application packages was analysed on the basis of:

1. Operational Feasibility
2. Technical Feasibility and
3. Economic feasibility.

#### 1. OPERATIONAL FEASIBILITY

This indicates that existing methods for solving systems of linear equations manually involves a lot of delay and are not directly applicable to the computer solution of the large-scale problems that arise in real world application. The proposed automated method in comparison to the manual method in solving systems of linear algebra on digital computers are minimizing the computer time (and thus cost) needed to obtain the solution, and minimizing inaccuracies due to roundoff errors.

## 2. TECHNICAL FEASIBILITY

The proposed alternative method to systems of linear equation should be carried out hand-in-hand with the manual methods of solutions. The aim is to enhance better understanding of the techniques and also to allow for certainty in solutions derived. However, the new system and its operation should be done by experienced personnel with both sound educational background and on the job experience in computer science. This will improve on the level of cohesion and understanding of the both procedures.

## 3. ECONOMIC FEASIBILITY

This basically analyses the cost-benefit ratio of the system proposed i.e cost of implementing the system proposed with the associated benefit. It is viewed from three perspectives

- i. Development Cost
- ii. Operational Cost and
- iii. Maintenance cost

## 3.1 DEVELOPMENT COST

This involves the actual cost of installing the computer such as the cost of computer hardware and other associated cost of installing the software and its accessories. After a careful cost and Benefit analysis the estimated unit of the computer repaired is Ten, one scanner, one printer and one uninterrupted power supply (UPS) and stabilizer and are all valued at about ₦2.8m

## 3.2 OPERATIONAL COST

After the installing of the new system it will have to be put in use or make operational otherwise, its purpose will be defeated. The cost of doing this is regarded as operational cost. And this involves the cost of employing at least one programmer and one analyst. There may be no need to employ supporting staff as those presently in the system are capable of operating the system after training.

The estimated salary per annum of the programmer and the analyst will be in the region of ₦260,000.00 and ₦ 210,000.00 respectively. The cost of training 4 mathematics lecturer for two weeks is estimated at ₦160,000.00 as per details below.

Principal Lecturer	-	40,500.00
Senior Lecturer	-	33,000.00
Lecturer 1	-	30,000.00
Lecturer 2	-	30,000.00
1 Programmer	-	260,000.00
1 Analyst	-	<u>210,000.00</u>
		<u>₦ 603,500.00</u>

Whether the alternative method is introduced or not, the Salaries of exiting lecturers would be paid so it is a fixed cost not relevant for this estimate.

### iii MAINTENANCE COST

This cost is the routine maintenance cost of the newly installed system. It may also be referred to as enhancement cost. The estimated cost of maintaining the new system will be relatively cheaper since the equipments are quite new. The estimated cost of doing this is in the region of ₦150,000.00 per annum, and it includes stationeries, electricity and servicing.

Other advantage associated with the new system will include reduction in :-

- i Cost of Stationeries
- ii Cost of Servicing
- iii Timeliness.

### 3.5 OBJECTIVES GUIDING THE INVESTIGATION

In system analysis, the problem identification is the starting point of a system life-cycle. Ability to therefore identify this problem permits further analysis, once the problem is discovered the design of the new system can be carried out. On the basis of the above, the following objectives were used as a guide in this investigation

- a. Reliability or Durability of the system
- b. Its Accuracy
- c. Eliminates rigidity in the system.

The above objectives were used as a guide in the investigation and were reflected in the design of the new system from the implementation plan to the conversion stage.

### 3.6 THE CURRENT SYSTEM

The system will be partial automation using pascal-programming language as the language of Communication.

Based on the principles of reasonable cost, flexibility and reliability the new system solutions to linear algebra is a customize type that allows further integrating of other aspects of automation into the system when the need arises.

The new systems have all the features of a user friendly system with the feature simplified for the operations and lecturers involved in the operation of the system..

### 3.7 REQUIREMENT SPECIFICATION:

This is divided into two for easy identification:

- i. Software Requirement Specification
- ii. Hardware Requirement Specification.

#### i. SOFTWARE REQUIREMENT SPECIFICATION

Software involves the types of software that is to be used. The software is in the internal structure of the computer and it includes:-

- a. M.S-DOS Version 6.22
- b. Pascal

#### ii THE HARDWARE REQUIREMENT SPECIFICATION

This is the physical part of the computer system and they are:-

- a. 1024KB Random Access Memory (RAM)
- b. 40 MB hard disk

- . Printer 132 Colour line printer
- . SVGA Monitor with colour capabilities.

## 8 COST BENEFIT ANALYSIS

After detailed sampling of different hardware component available, the following cost was estimated for the new proposed system under the following headings.

### 8.1 SYSTEM COST

#### Development Cost

System analysis and design the reseacher and other volunteers who do not take any monetary reward for their contributions did the job.

Software development and implementation was done by the reseacher and a programmer. Using the pascal compiler, it took the team about 120hours to complete the task and the rate charged per hour was ₦50.00. This amount to ₦18,000.00

Equipment purchase hardware such as personal computer (PCS), printer, stabilizer cetara and the cost of installation amounted to about ₦2.5m (previously stated in the study)

personnel training for two weeks for lecturer on the operation of the new system will cost ₦603,500.00 as previously calculated under operational cost.

System operation cost per annum using the following operational heading are

(a) Equipment Maintanance	45,000
(b) Program Maintanance	40,000
(c) Utilities- Electricity, Diesel	50,000
(d) Miscelleneous	<u>25,000</u>

₦16,000.00

The total cost of operating the new system is summarized below:

(i) Software Development/ Implemetation	18,00.00
(ii) Acqusition of equipment	2,500,000.00
(iii) Personal Training	405,000.00



(iv) Operating cost	<u>160,000.00</u>
	<u>₦3,083,000.00</u>

### 3.8.2 SYSTEM BENEFITS

(i) Saving from engaging the services of lecturers whose salaries are fixed and does not relate to the introduction of the system

(ii) Reduction in Overtime claim.

These savings will impact positively on the organisations (school) Through

- a. Better understanding of the method used.
- b. Prevent carrying too many paper work
- c. Create awareness and challenges of our time
- d. Cater for future expansion

Other benefits associated with the new system may not be quantified in monetary terms as they are qualitative. However, the change will impact immensely on the overall performance of the students and lecturers.

### 9 INPUT SPECIFICATION

Input data are required to be entered by the user based on the problem at hand. The program is written in such a way that the user provides the integer number by given a value which you are required to enter.

The input data is provided based on the problem at hand, which is to be solved.

### 10 OUTPUT SPECIFICATION

The output is what is expected to be produced by the system. This could be viewed by displaying on the screen or printed out from the printer to obtain the hard copy.

The following are the type of output that can be operated from the system

X1=

X2=

X3=

X4=

## CHAPTER FOUR

### SYSTEM DEVELOPMENT AND IMPLEMENTATION.

#### 4.1 INTRODUCTION.

Software is a term used to describe all written programs, which are used in a particular computer installation. It is a program procedure or rules and any associated documentation pertaining to the operation of a computer system. Software development entails series of activities or processes that should be carried out in the course of developing a new system. The software development begins with the laid down structure in general design and detailed design of the automated system.

The design determines the appropriate language for implementing the system. However, since system life cycle is all about system development, the software development is about a by-product of the system development. When a system is on ground, the tool that automate the system is software. Hence, the stages for their development are interwoven.

#### 4.2 CHOICE OF LANGUAGE

Computer language is a means of communicating between programmers and the computer programmer that use the language to instruct computer on how certain task or job should be done.

This choice of language depends on the following:

- Type of task or job
- The application of the task or job
- Volume of data element
- Complexity of the task or job

In this automation of the system, PASCAL programming language is the language of choice adopted for implementation. The choice of pascal is based on its high speed and its ability to use structured English that tries to express verbal statement in a more logical framework. It uses natural language along with ideas of logic and block structuring used in a computer language. The technique is useful when there are not too many conditions to be checked and the procedures are

basically repetitive. It is simple to understand by its users and ideal software for instructional purposes, it is also very interactive (user friendly) with a simple procedure orientation.

The version of pascal used in this program is known as version 5.5 provided along with disk operating system (DOS) from Microsoft (MS- DOS). It is provided with the following features

#### **Variables:**

Variables in pascal like any language is defined to be name used to store data that can be changed, and is called an identifier in pascal

#### **Data type:**

Pascal has different variations for declaring an identifier to be a specific data- some of these are real, integer, Boolean, Array, Character etc.

#### **Statements:**

Statements are the executables in pascal language. They can also be termed expressions. The following are pascal statements: Assignment Statement, Arithmetic Statement, Relational Statement and Logical statement.

### **4.3 SOFTWARE DEVELOPMENT AND TESTING**

In the course of developing this program or software (solutions to systems of linear equation) the following essential stages were followed:

#### **1. UNDERSTANDING THE PROBLEM**

Understanding a problem is part of the problem, hence, the programmer needs to know what exactly the program is to do and work from a program specification of the solution to systems of linear equations.

The specifications in this system are: -

- (a) The need for an alternative procedure for solution to system of linear equations
- (b) Perfect control of program and high restriction

Generally, program specification defines the inputs, processing and output. A good specification will define inputs, processing and output. It will normally specify

what is needed by giving the exact relationship between output and inputs from which they are derived rather than prescribing how the program should be written.

#### (ii) PLANNING THE METHODS OF SOLUTION.

The methods of solution is prepared using

- a) An algorithm
- b) A flow chart

For the design of the source program (see appendix (i) and (ii)). They are used to generate the source programs. Pascal programming language uses what is called compiler to translate source code to machine code.

#### TYPING THE INSTRUCTION IN A PROGRAMMING LANGUAGE.

This is the last step to step-wise refinement. The instruction design in a flow chart are converted to a programming language called pascal.

#### v) TESTING THE PROGRAM

Once a program is written, it has to be subjected to various tests that have been written out and transcribes correctly. These tests reveal errors, which are immediately corrected.

Areas tested include

- ) Integrating testing
- ) System testing
- ) User Acceptance testing

This program has been tested for A and b above and C is left for the user to execute.

#### 4 SYSTEM TESTING

This testing ensures that the individual programs have been written correctly and that the system as a whole will work with the link between the programs in a suit. There must be coordination with clerical procedure involved. To this end the system must provide the necessary list data as follows:

## (1) PROGRAM TESTING

Test data is supplied to ensure that all possible contingencies (as specified in the system specification) have been catered for by the programmer. Expected results of the test is worked out for comparison purposes.

## (2) PROCEDURE TESTING

This ensures that the whole system fits together as planned. This involves the clerical procedure which precedes input and output procedure. Over timing and ability of staff/students to handle the anticipated volumes will be under scrutiny.

## 4.5 CHANGE-OVER PROCEDURE

Change over procedure is the process of executing the new system vis-à-vis the old system This may be achieved in the following ways:

(a) Parallel

(b) Direct

(b) Pilot

### (1) PARALLEL

It is the process of running old and new system concurrently using the same inputs. The outputs are compared and reasons for differences resolved. Output from the old system continues to be distributed until the new system has proved satisfactory. At this stage the system is maintained and the new system is kept alongside the old system (in this work)

### (ii) DIRECT

the old system is discontinued altogether and the new system becomes operational immediately. However, for this research work the old system is not discontinued because the aim is to proffer Alternative method to solution by system of linear equation, which is.

(1) More reliable and effective

(2) Prompt solution to complex problems

(3) the calibre of staff/students involve do not require any much further training

### (iii) PILOT

This involves the changing ~~of~~ over of the part of the system at a time either as parallel or direct. That is a variation of either of the two methods previously discussed.

## 4.6 STARTING THE SYSTEM

Carrying out the following steps can start the system.

- (i) Boot the (system) computer
- (ii) At windows envioment, click start
- (iii) Highlight program
- (iv) from the Pop-menu Click Ms Dos
- v) A the c-prompt, change drive A: i.e type C:\> A: and press enter key.
- vi) Type A:\> turbo and press enter key.

This takes you to the IDE envioment of pascal.

- vii) Press ALT-F to open or press F3 .
- viii) Use tab key to to select Gauss J.pas
- ix) To compile program -ALT F9
- x) To run the program use Ctrl -F9

## CHAPTER FIVE

### 5.0 SUMMARY AND CONCLUSION

An attempt is made by developing an algorithm for the above procedure, which is called Gauss-Jordan elimination.

Let the starting array be the  $n \times (n+m)$  augmented matrix  $A$ . Consisting of an  $n \times n$  coefficient matrix with  $m$  appended columns:

$$\begin{bmatrix} a_{11} & a_{12} & \dots & a_{1n} & a_{1,n+1} & a_{1,n+2} & \dots & a_{1,n+m} \\ a_{21} & a_{22} & \dots & a_{2n} & a_{2,n+1} & a_{2,n+2} & \dots & a_{2,n+m} \\ \dots & \dots & \dots & \dots & \dots & \dots & \dots & \dots \\ a_{n1} & a_{n2} & \dots & a_{nn} & a_{n,n+1} & a_{n,n+2} & \dots & a_{n,n+m} \end{bmatrix}$$

Let  $k = 1, 2, \dots, n$  be the pivot counter, so that  $a_{kk}$  is the pivot element for the  $k$ th pass of the reduction. It is understood that the values of the elements of  $A$  will be modified during computation.

The algorithm is

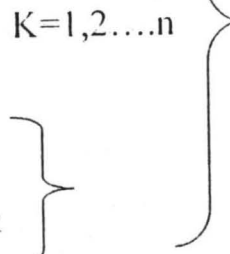
Normalization

$$a_{kj} \leftarrow a_{kj}/a_{kk} \quad j = n+m, n+m-1, \dots, k$$

Reduction

$$A_{ij} \leftarrow a_{ij} - a_{ik} a_{kj} \quad i = 1, 2, \dots, n$$

$$j = n+m, n+m-1, \dots, k \quad i \neq k$$



NOTE The left arrow is intended to mean substitution in place.

#### 5.1.1 DISCUSSION OF RESULT.

(a) Since no non zero elements appear to the left of  $a_{kk}$  in the  $k$ th row at the beginning of the  $k$ th pass it is unnecessary to normalize  $a_{kj}$  for  $j < k_i - 1$

(b) In order to avoid premature modification of elements in the pivot column, the column counter  $j$  is always decremented from its highest value ( $n+m$ ) until the pivot

is reached

Thus far, elementary matrices of the second kind have not been used. Neither has mention been made of the fact that at some stage, say the first, a potential divisor or pivot, such as  $b_{11}$ , may be zero. In this event, we can think of interchanging rows which is expressible of course, in terms of elementary row operations of the second kind. A related problem is that of maintaining sufficient accuracy during intermediate calculations in order to achieve specified accuracy in the final results. This might be expected for a nearly singular system. It can also happen when the magnitude of one of the pivot elements is relatively small. Consider for instance, the system

$$0.0003x_1 + 3.0000x_2 = 2.0001$$

$$1.0000x_1 + 1.0000x_2 = 1.0000$$

Which has the exact solution  $x_1 = 1/3, x_2 = 2/3$ . If the equations are solved using pivots on the matrix diagonal as indicated in the previous example there results.

$$1.0000x_1 + 10000x_2 = 6667$$

$$x_2 = 6666/9999$$

If  $x_2$  from the second equation is taken to be 0.6667, then from the first equation  $x_1 = 0.0000$ ; for  $x_2 = 0.66667, x_1 = 0.30000$ ; for  $x_2 = 0.666667, x_1 = 0.330000$  etc. the solution depends highly on the number of figures retained; if the equations are solved in reverse order, that is, by interchanging the two rows and proceeding as before, then  $x_2$  is found to be  $1.9998/2.9997 = 0.66667$ , while  $x_1 = 0.33333$ . This example indicates the advisability of choosing as the pivot the coefficient of largest absolute value in a column, rather than merely the first in the line.

### 5.1.2 Computer output

Considering the following example

$$2x_1 - 7x_2 + 4x_3 = 9$$

$$x_1 + 9x_2 - 6x_3 = 1$$

$$-3x_1 + 8x_2 + 5x_3 = 6$$

The computer program will solve as follows

It demands the following



Result

$m=n=3$

Input the augmented matrix

2 -7 4

1 9 -6

-3 8 5

Input the column vector [916]t

Input the identity matrix

1 0 0

0 1 0

0 0 1

output result (solution vector, rows)

$x_1 = 4$

$x_2 = 1$

$x_3 = 2$

Since the aim of introducing automated alternative method in solving systems of linear equation is to augment or rather add to the existing manual methods. It can therefore be interesting when you see an improvement in the system, particularly in this computer age.

The analysis and design of the automated solutions to system of linear equation has undergone a computer life cycle. This analysis was through with the aim of identifying associated problems, the feasibility studies carried out was to determine how feasible or viable the system would be. The cost and benefit analysis done was aimed at the benefit of the new (approach) system to the enhancement of students performance.

The emergence of this automation will help in eliminating or reducing minimally most of the problems or difficulties associated with the existing methods as well as improving its comprehension. Even though the new system has obvious advantages over the existing method, it is not without its own constraints, such as,

administrative bottlenecks in getting approval for the new approach from both the administrators and policy formulators especially in designing the curricular. It is capital intensive and the finance of the automation may be slowed or delayed. It may even be difficult to carry out.

Logistic constraints and power failure can frustrate the implementation plan of the new approach.

## 5.2 LIMITATION

There are unavoidable constraints that limits this project. The limitations range from that of time to financial. The limitation of the project can be summed as follows:

- 1) The project is designed to handle automation of solutions of systems of linear equation. Some of the reports generated by this design for effective and accurate performance of the procedure includes:

Elementary Transformations of matrices.

- i. Direct methods based on manipulations using the technique (s) discussed above.

These in themselves are not exhaustive and it becomes limitation.

- 2) Most of the entries are done manually. This could result to errors due to human limitation.
- 3) The alternative method can only be implemented on stand alone personal computers.
- 4) The alternative method is designed using pascal-programming language. That is, the alternative method must be implemented were there is a pascal compiler (programming language).

## CONCLUSION

The incorporation of computer-based alternative to solving problems together with manual methods in modern days has become a common phenomenon or

worldwide affair. This is not unconnected to the relevance of computer in virtually all aspects of human endeavour. This interest is, however, intensified by the capacity of computer in performing a given set of procedures with all the necessary accuracy. It is not subjected to committing errors, and has the ability to accomplish any task with high speed.

It is therefore, rational to introduce an improved application package like pascal in the automation of systems of linear equations in order to enhance the overall performance of the academia.

#### 5.4 RECOMMENDATIONS:

Based on the researcher's finding, it was discovered that the solution of systems of linear equation using the direct method exposes students ability to cope with automation procedures, which is largely based on the methods of elementary matrices. The new alternative approach to be incorporated along with the direct method has carefully looked at the advantageous way by which solutions to the systems of linear equations can be achieved more accurately, timely and efficiently with reduced roundoff errors.

It is therefore recommended that curriculum planners, school administrators and others, should introduce the designed alternative into their existing methods of solving linear equation problems, for accuracy and correct output, so as to improve in the students perception and understanding of the systems of linear equations generally.

## REFERENCES

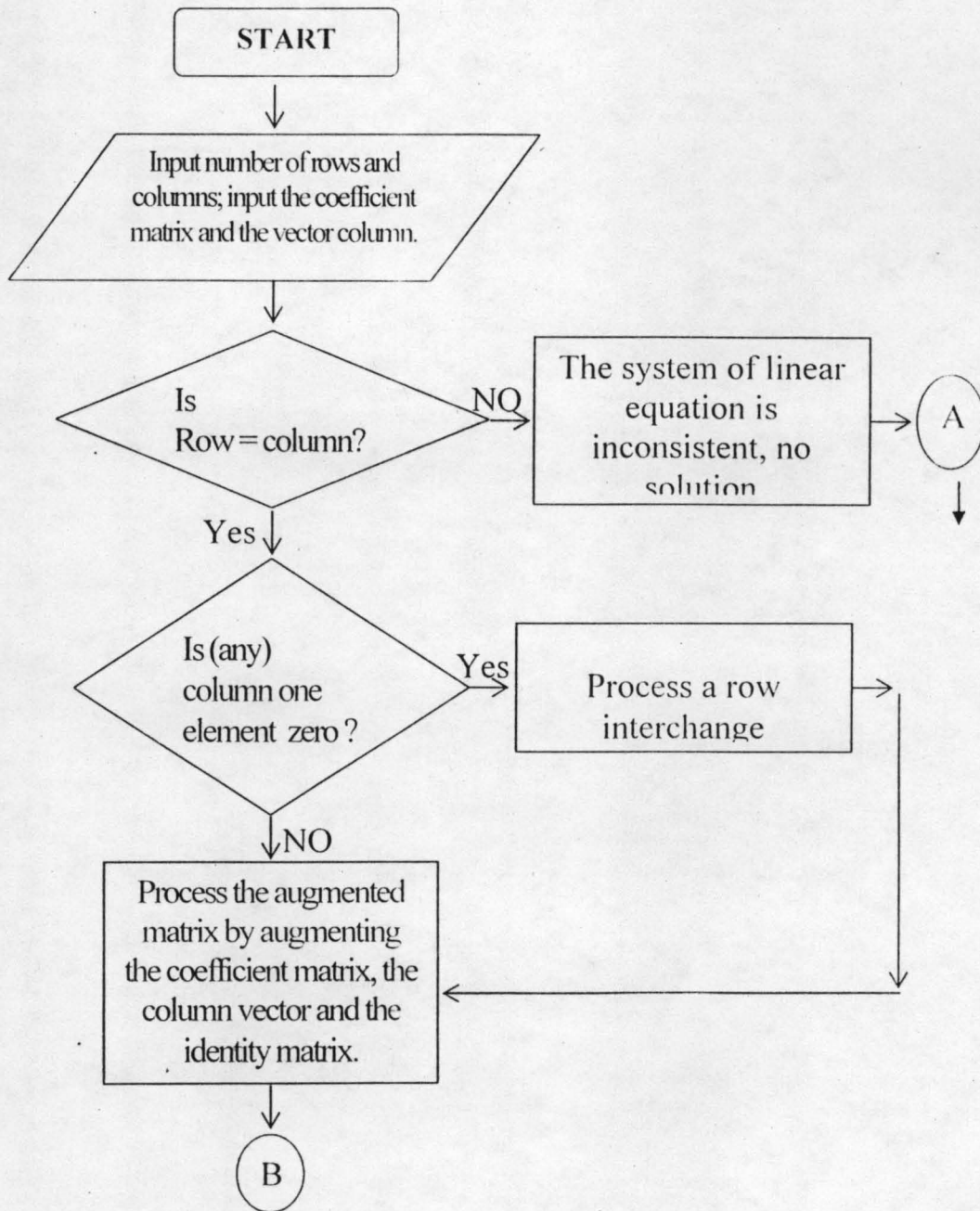
1. CARNAHAN, B. et al. 'Applied Numerical Methods' John Wiley & Sons. New York
2. LIPSCHU TZ. S Schaums Outline Series "Theory and Problems of Linear Algebra" McGraw-Hill.
3. HUGGINS, E. 'Mastering Pascal Programming' Macmillan Press Ltd, London.
4. YOMI . M. A. General Mathematics Course DCPT 013 Handout for PGD Students in Computer Science.
5. BADMUS, R. O. Systems Analysis and Design Course DCPT 028 Handout for PGD Students in Computer Science

## APPENDIX 1

### Gauss-Jordan Elimination Method Algorithm.

1. Starting array  $n \times (n + m)$
  2. Pivot Counter  $K = 1, 2, \dots, n$   
Pivot Element  $a_{kk}$
  3. Normalization  $a_{kj} \leftarrow a_{kj}/a_{kk} \quad j = n + m, n + m - 1, \dots, k$
  4. Reduction  $a_{ij} \leftarrow a_{ij} - a_{ik} a_{kj}$   
 $j = n + m, n + m - 1, \dots, k$
- $k = 1, \dots, n$   
 $i = 1, 2, \dots, n$   
 $(i \neq k)$

**APPENDIX 2**  
**Gauss Jordan Elimination Method**  
**FLOW CHART**



```

program Gauss_Jordan;

```

```

  program to solve the system of linear equations using Gauss elimination
  method written by

```

```

  Name: Umar, O. Aydu

```

```

  Date: 13-09-2003

```

```

  Project work on completion of a Postgraduate programme in the Department
  of Computer Science, Faculty of Engineering, Ain Shams University,
  Cairo, Egypt.

```

```

  *****

```

```

  MatrixDef=array(1..10,1..10) of real;
  ColumnDef=array(1..10) of real;

```

```

  Rows,C:integer;
  Matrix:MatrixDef;
  Vector:VectorDef;
  Column:ColumnDef;

```

```

  procedure InputMatrix(var M:Matrix;MatrixDef:MatrixDef;var Rows

```

```

  Columns:integer);

```

```

  A procedure to enter the Coefficient matrix and the vector column;

```

```

  label 5;

```

```

  var n:integer;

```

```

  begin

```

```

    write('Enter the number of Equations(rows):');readln(rows);

```

```

    write('Enter the number of Unknowns(column):');readln(columns);writeLn;

```

```

    writeLn('MATRIX ELEMENTS ENTRY');

```

```

    for m:=1 to Rows do

```

```

      begin

```

```

        writeLn('Enter row ',m,':');

```

```

        for n:=1 to columns do

```

```

          begin

```

```

            read(Matrix[m,n]);

```

```

          end;

```

```

        end;

```

```

      end;

```

```

    end;

```

```

  *****

```

```

  writeLn('WRITTEN BY UMAR O. AYDU');

```

```

  writeLn('IN PARTIAL FULFILLMENT FOR AN AWARD');

```

```

  writeLn('OF A PGD IN COMPUTER SCIENCE OF THE');

```

```

  writeLn('MATH/COMPUTER SCIENCE DEPARTMENT, AIN SHAMS');

```

```

  writeLn('UNIVERSITY, CAIRO, EGYPT');

```

```

  writeLn('Press Enter key to continue...');readln;

```

```

  writeLn('*****');

```

```

  writeLn('');

```

```

  writeLn('');

```

```

  writeLn('');

```

```

  writeLn('');

```

```

  writeLn('');

```

```

  writeLn('');

```

```

  writeLn('');

```

```

  writeLn('');

```

```

  writeLn('');

```

```

  writeLn('');

```

```

  writeLn('');

```

```

  writeLn('');

```

```

  writeLn('');

```

```

  writeLn('');

```

```

  writeLn('');

```

```

  writeLn('');

```

```

  writeLn('');

```

```

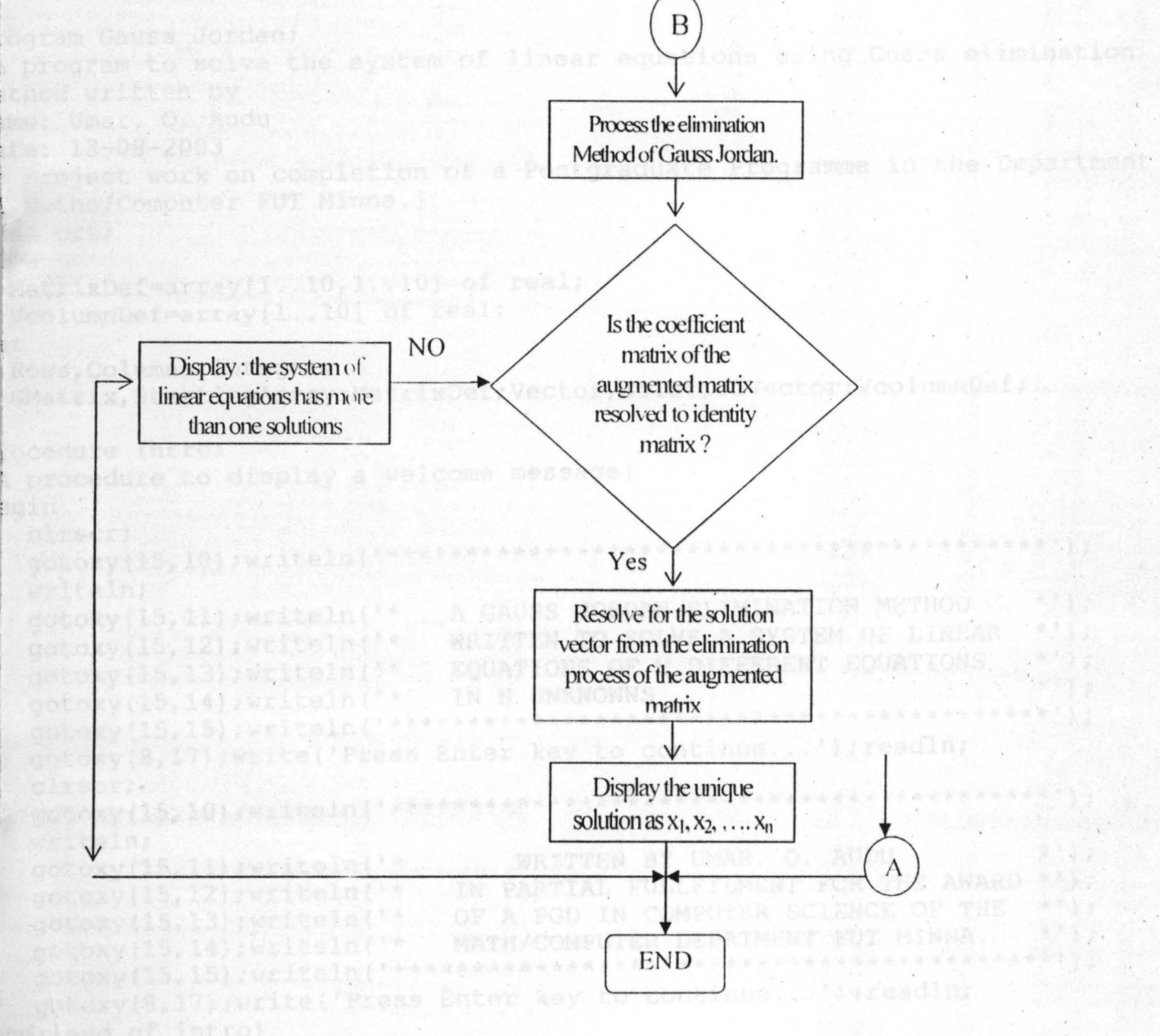
  writeLn('');

```

```

  writeLn('');

```



```

for m:=1 to Rows do
  for n:=Columns+2 to 2*Columns+1 do
    StartingArray[m,n]:=Ident[m,n-(Columns+1)];
end;{end of Augemented Matrix}

```

```

procedure RowInterchange(var GMatrix:MatrixDef;Rows,Columns:integer);
{A procedure to process row interchange in case if first element of
the first column entries is zero}

```

```

var m,n:integer;
    tempValue:real;
begin
  for m:=1 to Rows-1 do
    if GMatrix[m,1]=0.0 then
      for n:=1 to Columns do
        begin
          tempValue:=GMatrix[m,n];
          GMatrix[m,n]:=GMatrix[m+1,n];
          GMatrix[m+1,n]:=tempValue
        end
      end;{end of Row Interchange}

```

```

procedure EliminationProcess(var SolutionVector:VcolumnDef;StartingArray:Ma
ixDef;Rows,
Columns:integer);

```

```

{A procedure that caters for Normalisation and Reduction process defined by
Gauss Jordan Algorithm}

```

```

var i,j,k:integer;
begin
  {Elimination process start here}
  for k:=1 to Rows do
    begin
      {Normalization process of the augmented matrix here}
      for j:=(Rows+Columns)+1 downto k do
        StartingArray[k,j]:=StartingArray[k,j]/StartingArray[k,k];{pivot E
ment}
      {Reduction process of the augmented matrix here}
      for i:=1 to Rows do
        if i<>k then
          for j:=(Rows+Columns)+1 downto k do
            StartingArray[i,j]:=StartingArray[i,j]-StartingArray[i,k]*Star
tingArray[k,j];
          end;{end of Elimination process}
          {Assigning the final solution of computation i.e the solution vector}
          for i:=1 to Rows do
            SolutionVector[i]:=StartingArray[i,Columns+1];
          end;{end of Elimination process}

```

```

procedure Displayresult(SolutionVector:VcolumnDef;Rows:integer);
{A procedure to display the computational result on the screen}
var i:integer;
begin

```



Gaussj.pas

```
Clrscr;
Writeln ('THE UNIQUE SOLUTION');
For I: =1 to rows do
    Writeln ('value x ', I, '=', Solutionvector [ I ]:3:4);
Readln
End; {end of display procedure}

{Main body of the program}
begin
intro;
clrscr;
inputMatrix (Gmatrix, Vector, Rows, Columns);
if consistencyTest (Rows, Columns ) then
    begin
        Rowinterchange (Gmatrix,Rows,Columns);
        AugmentedM (StartingArray,Gmatrix, Vector<Rows,Columns);
        Eliminationprocess (SolutionVector,StartingArray,Rows,Columns);
        Displayresult (solutionVector,Rows);
    End
Else
    If Rows>Columns then
        Begin
            Writeln (The system of linear equations is inconsistent and
undetermined');
            Writeln ('hence No Solution!');
            Readln;
        End
    Else
        Begin
            Writeln (,The solution of the linear system is non-unique`);
            Writeln ('having series of solutions. ');
            Readln;
        End;
        Writeln;writeln ('THANKS TO GUASS JORDAN');readln
End.{end of guass program}
```

**AN AUTOMATED SOLUTION FOR  
LINEAR ALGEBRAIC SYSTEMS**

*BY*

**AUDU UMARU OMESA**  
*PGD/MCS/2001/1091*

**DEPARTMENT OF MATHEMATICS AND  
COMPUTER SCIENCE**  
SCHOOL OF SCIENCE AND SCIENCE EDUCATION  
FEDERAL UNIVERSITY OF TECHNOLOGY, MINNA

**NOVEMBER 2003.**